



NIKO STEEL CENTRE

- STAINLESS STEEL
- CARBON STEEL
- ALLOY STEEL
- NICKEL ALLOYS

STEEL solution for a **Better Industry**

STAINLESS STEEL

CARBON STEEL

ALLOY STEEL

NICKEL ALLOYS



NIKO STEEL CENTRE

INDEX

• Introduction	3
• Pipe & Tubes ASTM / API / BS / DIN / IS	4
• Carbon Steel, Alloy Steel, Low Temp, Pipe and Tubes Specification	5
• Nickel Alloys - Technical Info of Nickel Based Alloys	6
• SHEETS, PLATES, COILS & ROUND BAR, HEX, SQUARE	7
• PIPES & TUBES	8
• C.S. / A.S. Pipes and Tubes Schedule Dimensions, Wall Thickness, WT. / MTR (KG)	9
• Mild Steel Pipes Confirm to IS : 1239 (Part 1) - 1979	10
• Butt Weld Fittings to ANSI B 16.9 & 16.28	11
• Butt Weld Pipe Fitting Dimensional Standard ANSI B 16.9 / 16.28 / MSS SP-43	12
• Dimensions of Butt Welding Fittings to ANSI B 16.9 (upto 48") / MSS SP 43 (upto 24")	13
• Dimensional Tolerance ANSI B 16.9 / 16.28 / MSS SP-43	14
• Dimension in mm of Forged Screwed Fittings to ANSI B-16.11 Threaded to ASA B 2.1	15
• Flanges to ANSI B16.5 / 16.47 / 16.10 / 16.36 / 16.48	16
• Dimensions of Forged Flanges ANSI 16.5 - ASA 150 / 300 CLASS	17
• Dimensions of Class 600 / 900 Flanges as Per ANSI B 16.5	18
• Class 150 / 300 Long Weld Neck Flanges	19
• Reducing & Flat Size Extra Strong, Run and Branch Forged	20
• Size on Size Schedule 160 & Double Extra Strong Run And Branch Forged & Outlet Fittings	21
• S. S. Instrumental Ferrule Fittings	22
• Product Range - Bolt/screw, Thread Rod, Nuts, Washers, Machine Screws, Self Tapping Screw	23
• VALVES	24
• Blind Rivets / Rivets Solid / Hollow (semi) / Blind Rivets Nut / Nut Insert	25
• Fabricated Product / Heavy Forged Components	26
• Application Industries	27

STAINLESS STEEL

CARBON STEEL

ALLOY STEEL

NICKEL ALLOYS



NIKO STEEL CENTRE

Introduction

Niko Steel Centre (NSC) was established in the year of 1981, with over 25 years of experience in the Indian market, promoted by Mr. Poonamchand Shah, are the most reputed Exporter / Importer / Stockist / Supplier of Industrial consumables, Steel Sheets / Plates, Steel Pipes / Tubes, Seamless Pipes, Welded Pipes, Steel Round / Hex / Flat / Square Bars, Welding Electrodes etc.

Niko Steel Centre takes immense in introducing itself as one of the leading names in the Engineering Industry having Integrated Steel, Complex with modern integration to supply stainless steel raw materials. We have experience in this field for past 25 years. We are the importers, exporters, stockist & suppliers of Stainless Steel Sheets, Plates, Flanges, Flats, Rods, Round Bar, Pipes, Tubes, Welding electrodes, Fittings etc.



Over a decades of progress have consistently made us realize that more than products, it is understanding the client's requirement and giving maximum services to the customer is what makes us stand apart others. This enables us to meet strict requirements of manufacturing and testing codes.

Each of our department right from procurement, inspection, inventory, market, sales and services are fully automated for a better supply chain management, so as to offer the best product quality and prompt service to our clients. Along with technological equipment, manpower is also given special attention. All our professionals are highly dedicated and committed to their client's requirements. Our team of workers starves to provides quality service to you according to your specification.



STAINLESS STEEL

CARBON STEEL

ALLOY STEEL

NICKEL ALLOYS



NIKO STEEL CENTRE

PIPE & TUBES ASTM / API / BS / DIN / IS

MATERIAL SPECIFICATION FOR OF STAINLESS STEEL, ALLOY STEEL, CARBON STEEL & MILD STEEL.

PIPE SPECIFICATION	CHEMICAL PROPERTIES							MECHANICAL PROPERTIES					OTHERS	
	C%	Mn%	P% (Max)	S% (Max)	Si%	Cr%	Ni%	Mo%	U.T.S. (Min) Mpa	Y.S. (Min) Mpa	ELONG. (Min)			
											L	T		T
ASTMA 312 Gr. TP 304	0.080 Max	2.00 Max	0.045	0.030	1.00 Max	18.0-20.0	8.0-11.0	-	515	205	35	25	-	
ASTMA 312 Gr. TP 304L	0.035 Max	2.00 Max	0.045	0.030	1.00 Max	18.0-20.0	8.0-13.0	-	485	170	35	25	-	
ASTMA 312 Gr. TP 304H	0.04-0.10	2.00 Max	0.045	0.030	1.00 Max	18.0-20.0	8.0-11.0	-	515	205	35	25	-	
ASTMA 312 Gr. TP 304LN	0.035 Max	2.00 Max	0.045	0.030	1.00 Max	18.0-20.0	8.0-12.0	-	515	205	35	25	N%=0.10-0.16	
ASTMA 312 Gr. TP 309S	0.080 Max	2.00 Max	0.045	0.030	1.00 Max	22.0-24.0	12.0-15.0	0.75 Max	515	205	35	25	-	
ASTMA 312 Gr. TP 310S	0.080 Max	2.00 Max	0.045	0.030	1.00 Max	24.0-26.0	19.0-22.0	0.75 Max	515	205	35	25	-	
ASTMA 312 Gr. TP 316	0.080 Max	2.00 Max	0.045	0.030	1.00 Max	16.0-18.0	11.0-14.0	2.00-3.00	515	205	35	25	-	
ASTMA 312 Gr. TP 316L	0.035 Max	2.00 Max	0.045	0.030	1.00 Max	16.0-18.0	10.0-14.0	2.00-3.00	485	170	35	25	-	
ASTMA 312 Gr. TP 316H	0.04-0.10	2.00 Max	0.045	0.030	1.00 Max	16.0-18.0	11.0-14.0	2.00-3.00	515	205	35	25	-	
ASTMA 312 Gr. TP 316LN	0.035 Max	2.00 Max	0.045	0.030	1.00 Max	16.0-18.0	11.0-14.0	2.00-3.00	515	205	35	25	N%=0.10-0.16	
ASTMA 312 Gr. TP 317	0.080 Max	2.00 Max	0.045	0.030	1.00 Max	18.0-20.0	11.0-14.0	3.00-4.00	515	205	35	25	-	
ASTMA 312 Gr. TP 317L	0.035 Max	2.00 Max	0.045	0.030	1.00 Max	18.0-20.0	11.0-15.0	3.00-4.00	515	205	35	25	-	
ASTMA 312 Gr. TP 321	0.080 Max	2.00 Max	0.045	0.030	1.00 Max	17.0-19.0	9.0-12.0	-	515	205	35	25	T1%=(5XC)-0.70	
ASTMA 312 Gr. TP 321H	0.04-0.10	2.00 Max	0.045	0.030	1.00 Max	17.0-19.0	9.0-12.0	-	515	205	35	25	T1%=(4XC)-0.60	
ASTMA 312 Gr. TP 347	0.080 Max	2.00 Max	0.045	0.030	1.00 Max	17.0-19.0	9.0-13.0	-	515	205	35	25	Cb%=(10XC)-1.00	
ASTMA 312 Gr. TP 347H	0.04-0.10	2.00 Max	0.045	0.030	1.00 Max	17.0-19.0	9.0-13.0	-	515	205	35	25	Cb%=(8XC)-1.10	
ASTMA 358 Gr. TP 304	0.080 Max	2.00 Max	0.045	0.030	0.75 Max	18.0-20.0	8.0-10.5	-	515	205	40	40	N%=0.10 Max, HRB=92 Max	
ASTMA 358 Gr. TP 304L	0.035 Max	2.00 Max	0.045	0.030	0.75 Max	18.0-20.0	8.0-12.0	-	485	170	40	40	N%=0.10 Max, HRB=92 Max	
ASTMA 358 Gr. TP 309S	0.080 Max	2.00 Max	0.045	0.030	0.75 Max	22.0-24.0	12.0-15.0	-	515	205	40	40	HRB=95 Max	
ASTMA 358 Gr. TP 310S	0.080 Max	2.00 Max	0.045	0.030	1.50 Max	24.0-26.0	19.0-22.0	-	515	205	40	40	HRB=95 Max	
ASTMA 358 Gr. TP 316	0.080 Max	2.00 Max	0.045	0.030	0.75 Max	16.0-18.0	10.0-14.0	2.00-3.00	515	205	40	40	N%=0.10 Max, HRB=95 Max	
ASTMA 358 Gr. TP 316L	0.035 Max	2.00 Max	0.045	0.030	0.75 Max	16.0-18.0	10.0-14.0	2.00-3.00	485	170	40	40	N%=0.10 Max, HRB=95 Max	
ASTMA 358 Gr. TP 321	0.080 Max	2.00 Max	0.045	0.030	0.75 Max	17.0-19.0	9.0-12.0	-	515	205	40	40	N%=0.10 Max, T1%=5(C+N)-0.70, HRB=95 Max	
ASTMA 358 Gr. TP 347	0.080 Max	2.00 Max	0.045	0.030	0.75 Max	17.0-19.0	9.0-13.0	-	515	205	40	40	Cb%=(10XC)-1.00, HRB=92 Max	
ASTMA 106 Gr. A	0.25 Max	0.27-0.93	0.035	0.035	0.10 Min	0.40 Max	0.40 Max	0.15 Max	330	205	35	25	Cu%:0.40 Max, Va%: 0.08	
ASTMA 106 Gr. B	0.30 Max	0.29-1.06	0.035	0.035	0.10 Min	0.40 Max	0.40 Max	0.15 Max	415	240	30	16.5	Cu%:0.40 Max, Va%: 0.08	
ASTMA 106 Gr. C	0.35 Max	0.29-1.06	0.035	0.035	0.10 Min	0.40 Max	0.40 Max	0.15 Max	485	275	30	16.5	Cu%:0.40 Max, Va%: 0.08	
ASTMA 53 Gr. A	0.25 Max	0.95 Max	0.050	0.045	-	0.40 Max	0.40 Max	0.15 Max	330	205	30	16.5	Cu%:0.40 Max, Va%: 0.08	
ASTMA 53 Gr. B	0.30 Max	1.20 Max	0.050	0.045	-	0.40 Max	0.40 Max	0.15 Max	415	240	30	16.5	Cu%:0.40 Max, Va%: 0.08	
ASTMA 333 Gr. 1	0.30 Max	0.40-1.06	0.025	0.025	0.10 Min	-	-	-	380	205	35	25	Impact Test= -45 °C, J=18 Min, HRB=85 Max	
ASTMA 333 Gr. 6	0.30 Max	0.29-1.06	0.025	0.025	0.10 Min	-	-	-	415	240	30	16.5	Impact Test= -45 °C, J=18 Min, HRB=85 Max	
ASTMA 335 Gr. P1	0.10-0.20	0.30-0.80	0.025	0.025	0.10-0.50	-	-	0.44-0.65	380	205	30	20	-	
ASTMA 335 Gr. P2	0.10-0.20	0.30-0.61	0.025	0.025	0.10-0.30	0.50-0.81	-	0.44-0.65	380	205	30	20	-	
ASTMA 335 Gr. P5	0.15 Max	0.30-0.60	0.025	0.025	0.50 Max	4.00-6.00	-	0.45-0.65	415	205	30	20	-	
ASTMA 335 Gr. P9	0.15 Max	0.30-0.60	0.025	0.025	0.25-1.00	8.00-10.00	-	0.90-1.10	415	205	30	20	-	
ASTMA 335 Gr. P11	0.05-0.15	0.30-0.60	0.025	0.025	0.50-1.00	1.00-1.50	-	0.44-0.65	415	205	30	20	-	
ASTMA 335 Gr. P12	0.05-0.15	0.30-0.61	0.025	0.025	0.50 Max	0.80-1.25	-	0.44-0.65	415	220	30	20	-	
ASTMA 335 Gr. P22	0.05-0.15	0.30-0.60	0.025	0.025	0.50 Max	1.90-2.60	-	0.87-1.13	415	205	30	20	-	
ASTMA 335 Gr. P91	0.08-0.12	0.30-0.60	0.020	0.010	0.20-0.50	8.00-9.50	0.40 Max	0.85-1.05	620	440	20	-	V%=0.18-0.25, Ni%=0.030-0.070, Al%=0.02 Max, Cb%=0.06-0.10	
ASTMA 213 Gr. T2	0.10-0.20	0.30-0.61	0.025	0.025	0.10-0.30	0.50-0.81	-	0.44-0.65	415	205	30	30	HRB=85 Max	
ASTMA 213 Gr. T5	0.15 Max	0.30-0.60	0.025	0.025	0.50 Max	4.00-6.00	-	0.45-0.65	415	205	30	30	HRB=85 Max	
ASTMA 213 Gr. T11	0.05-0.15	0.30-0.60	0.025	0.025	0.50-1.00	1.00-1.50	-	0.44-0.65	415	205	30	30	HRB=85 Max	
ASTMA 213 Gr. T12	0.05-0.15	0.30-0.61	0.025	0.025	0.50 Max	0.80-1.25	-	0.44-0.65	415	220	30	30	HRB=85 Max	
ASTMA 213 Gr. T22	0.05-0.15	0.30-0.60	0.025	0.025	0.50 Max	1.90-2.60	-	0.87-1.13	415	205	30	30	HRB=85 Max	
ASTMA 179	0.06-0.18	0.27-0.63	0.035	0.035	-	-	-	-	325	180	35	35	HRB=72 Max	
ASTMA 210 Gr. A1	0.27 Max	0.93 Max	0.035	0.035	0.10 Min	-	-	-	415	255	30	30	HRB=79 Max	



STAINLESS STEEL

CARBON STEEL

ALLOY STEEL

NICKEL ALLOYS



NIKO STEEL CENTRE

CARBON STEEL, ALLOY STEEL, LOW TEMP, PIPE AND TUBES SPECIFICATION

CHEMICAL ANALYSIS									MECHANICAL PROPERTIES			SPECIFIC REQUIREMENT
									TENSILE STRENGTH	YIELD STRENGTH	ELONGATION	
SPECIFICATION	WT	C%	Mn %	P % MAX	S% MAX	SI%	Cr%	Mo%	Mpa	Mpa	50mm MIN Longitudinal	
ASTM A 53/A	AW	0.25MAX	0.95MAX	0.050	0.060	-	-	-	331MIN	207MIN	36	Cr Mo Cu Ni Va 0.40 0.15 0.40 0.40 0.08 Five elements not to exceed 1%
ASTM A 53/B	AW	0.30MAX	1.20MAX	0.050	0.060	-	-	-	413MIN	240MIN	29.5	
ASTM A 106/A	AW	0.25MAX	0.27-0.93	0.025	0.025	0.10MIN	0.40MAX	0.15MAX	330MIN	205MIN	35/28	
ASTM A 106/B	AW	0.30MAX	0.29-1.06	0.025	0.025	0.10MIN	0.40MAX	0.15MAX	415 MIN	240MIN	30/22	
ASTM A 106/C	AW	0.35MAX	0.29-1.06	0.025	0.025	0.10MIN	0.40MAX	0.15MAX	485MIN	275MIN	30/22	
ASTM A 179	MW	0.06-0.18	0.27-0.63	0.048	0.048	-	-	-	325MIN	180MIN	35.0	Hardness 72 HRB Max
ASTM A 214	MW	0.18MAX	0.27-0.63	0.050	0.050	-	-	-	385MIN	180MIN	35.0	Hardness 72 HRB Max
ASTM A 192	MW	0.06-0.18	0.27-0.63	0.048	0.048	0.25MAX	-	-	325MIN	180MIN	35.0	Hardness 77 HRB Max
ASTM A 209/T1	MW	0.10-0.20	0.30-0.80	0.045	0.045	0.10-0.50	-	0.44-0.65	380MIN	205MIN	30/22	Hardness 80 HRB Max
ASTM A 209/T1a	MW	0.15-0.25	0.30-0.80	0.045	0.045	0.10-0.50	-	0.44-0.65	365MIN	195MIN	30/22	Hardness 81 HRB Max
ASTM A 209/T1B	MW	0.14MAX	0.30-0.80	0.045	0.045	0.10-0.50	-	0.44-0.65	415MIN	220MIN	30/22	Hardness 77 HRB Max
ASTM A 210/A-1	MW	0.27max	0.93max	0.048	0.058	0.10MIN	-	-	415MIN	255MIN	30/22	Hardness 79 HRB Max
ASTM A 210/C	MW	0.35MAX	0.29-1.06	0.048	0.058	0.10MIN	-	-	485MIN	275MIN	30/22	Hardness 89 HRB Max
ASTM A 213/T2	MW	0.10/0.20	0.30-0.61	0.045	0.045	0.10-0.30	0.50-0.81	0.44-0.65	415MIN	205MIN	30/22	Hardness 85 HRB Max
ASTM A 213/T5	MW	0.15MAX	0.30-0.60	0.030	0.030	0.50MAX	4.00-6.00	0.44-0.65	415MIN	205MIN	30/22	Hardness 85 HRB Max
ASTM A 213/T11	MW	0.15MAX	0.30-0.60	0.030	0.030	0.50-1.00	1.00-1.50	0.44-0.65	415MIN	205MIN	30/22	Hardness 85 HRB Max
ASTM A 213/T12	MW	0.15MAX	0.30-0.61	0.045	0.045	0.50MAX	0.80-1.25	0.44-0.65	415MIN	205MIN	30/22	Hardness 85 HRB Max
ASTM A 213/T22	MW	0.15MAX	0.30-0.60	0.030	0.030	0.50MAX	1.90-2.60	0.87-1.13	415MIN	205MIN	30/22	Hardness 85 HRB Max
ASTM A 333/1	AW	0.30MAX	0.40-1.06	0.025	0.025	-	-	-	380MIN	205MIN	25/20	IMPACT AS -50F FOR 40X10J/18/14 -50F40X10J/18/14 90 HRB MAX
ASTM A 333/6	AW	0.30MAX	0.29-1.06	0.025	0.025	0.10MIN	-	-	415MIN	240MIN	30/22	
ASTM A 334/1	AW	0.30MAX	0.40-1.06	0.025	0.025	-	-	-	380MIN	205MIN	35/28	
ASTM A 334/6	MW	0.30MAX	0.29-1.06	0.025	0.025	0.10MIN	-	-	415MIN	240MIN	30/22	
ASTM A 335/P1	AW	0.10-0.20	0.30-0.80	0.025	0.025	0.10-0.50	-	0.44-0.65	380MIN	205MIN	30/22	
ASTM A 335/P2	AW	0.10-0.20	0.30-0.61	0.025	0.025	0.10-0.30	0.50-0.81	0.44-0.65	380MIN	205MIN	30/22	
ASTM A 335/P5	AW	0.15MAX	0.30-0.60	0.025	0.025	0.50MAX	4.00-6.00	0.45-0.65	415MIN	205MIN	30/22	
ASTM A 335/P9	AW	0.15MAX	0.30-0.60	0.025	0.025	0.25-1.00	8.00-10.00	0.09-1.10	415MIN	172MIN	30/22	
ASTM A 335/P11	AW	0.15MAX	0.30-0.60	0.025	0.025	0.50-1.00	1.00-1.50	0.44-0.65	415MIN	205MIN	30/22	
ASTM A 335/P12	AW	0.15MAX	0.30-0.61	0.025	0.025	0.50MAX	0.80-1.25	0.44-0.65	415MIN	205MIN	50/22	
ASTM A 335/P22	AW	0.15MAX	0.30-0.60	0.025	0.025	0.50MAX	1.90-2.60	0.87-1.13	415MIN	205MIN	30/22	
BS/3059/1/33		0.15Max	0.30-0.70	0.050	0.050	-	-	-	324-441	186MIN	25	
BS/3059/2/33		0.15MAX	0.40-0.70	0.050	0.050	0.10-0.35	-	-	324-441	186MIN	21	
BS/3059/2/45		0.12-0.18	0.90-1.20	0.035	0.035	0.10-0.35	-	-	441-560	245MIN	22	
BS/3059/2/620		0.10-0.15	0.40-0.70	0.040	0.040	0.10-0.35	0.70-1.10	0.45-0.65	441-618	235MIN	22	
DIN/17175/ST35.8		0.17MAX	0.40MIN	0.040	0.040	0.35MAX	-	-	340-441	235MIN	25	
DIN/17175/ST45.8		0.22MAX	0.45MIN	0.040	0.040	0.10-0.35	-	-	441-540	255 MIN	25	
DIN/17175/15MO3		0.12-0.20	0.50-0.80	0.040	0.040	0.10-0.35	-	0.25-0.35	441-540	284MIN	21	
DIN/17175/13CrMO44		0.10-0.18	0.40-0.70	0.040	0.040	0.10-0.35	0.70-1.60	0.40-0.50	441-570	294MIN	22	
DIN/17175/10CrM910		0.15MAX	0.40-0.60	0.040	0.040	0.15-0.50	2.0-2.5	0.9-1.10	441-570	294MIN	22	
ASTM A 199/T5	MW	0.50-0.15	0.30-0.60	0.030	0.030	0.50MAX	4.00-6.00	0.45-0.65	415MIN	170MIN	30/22	HARDNESS 85 HRB MAX
ASTM A 199/T11	MW	0.05-0.15	0.30-0.60	0.030	0.030	0.50-1.00	1.00-1.50	0.44-0.65	415MIN	170MIN	30/22	HARDNESS 85 HRB MAX
ASTM A 199/T22	MW	0.05-0.15	0.30-0.60	0.030	0.030	0.50MAX	1.90-2.60	0.87-1.13	415MIN	170MIN	30/22	HARDNESS 85 HRB MAX
ASTM A 199/T4	MW	0.15MAX	0.30-0.60	0.030	0.030	0.50-1.00	2.15-2.85	0.44-0.65	415MIN	170MIN	30/22	HARDNESS 85 HRB MAX
ASTM A 199/T7	MW	0.15MAX	0.30-0.60	0.030	0.030	0.50-1.00	6.00-8.00	0.45-0.65	415MIN	170MIN	30/22	HARDNESS 85 HRB MAX
ASTM A 200/T5	MW	0.15MAX	0.30-0.60	0.030	0.030	0.50-1.00	4.00-6.00	0.45-0.65	415MIN	170MIN	30/22	HARDNESS 85 HRB MAX
ASTM A 200/T11	MW	0.05-0.15	0.30-0.60	0.030	0.030	0.50-1.00	1.00-1.50	0.44-0.65	415MIN	170MIN	30/22	HARDNESS 85 HRB MAX
ASTM A 200/T22	MW	0.05-0.15	0.30-0.60	0.030	0.030	0.50MAX	1.90-2.60	0.87-1.13	415MIN	170MIN	30/22	HARDNESS 85 HRB MAX
ASTM A 200/T4	MW	0.05-0.15	0.30-0.60	0.030	0.030	0.50-1.00	2.15-2.85	0.44-0.65	415MIN	170MIN	30/22	HARDNESS 85 HRB MAX
ASTM A 200/T7	MW	0.15MAX	0.30-0.60	0.030	0.030	0.50-1.00	6.00-8.00	0.45-0.65	415MIN	170MIN	30/22	HARDNESS 85 HRB MAX
ASTM A 199/T9	MW	0.15MAX	0.30-0.60	0.030	0.030	0.25-1.00	8.00-10.0	0.90-1.10	415MIN	170MIN	30/22	HARDNESS 89 HRB MAX

STAINLESS STEEL

CARBON STEEL

ALLOY STEEL

NICKEL ALLOYS



NIKO STEEL CENTRE

NICKEL ALLOYS

TECHNICAL INFO OF NICKEL BASED ALLOYS

U.S.A. / GROSSBRITANNIE U.S.A. / GRANDE-BRETAGNE U.S.A. / GREAT BRITAN													
Analyses	Analyses Composition												
Handelsbezeichnung Designation Commercial Commercial designation	C%	Co%	Cr%	Mo%	Ni%	V%	W%	Ai%	Cu%	Nb/Cb Ta%	Ti%	Fe%	Sonstige Autres -Other %
Monel 400	0.12	-	-	-	65.0	-	-	-	32.0	-	-	1.5	Mn 1.
Monel 401	0.10	-	-	-	43.0	-	-	-	53.0	-	-	0.75	Si 0.25;Mn z25
Monel 404	0.15	-	-	-	52.0-57.0	-	-	0.05	rest/bal	-	-	0.50	Mn 0.10; Si 0.10;S o.024
Monel 502	0.10	-	-	-	63,0-17.0	-	-	2,5-3,5	rest/bal	-	0.50	2.0	Mn 1.5;Si:so .010
Monel k 500	0.13	-	-	-	64.0	-	-	2.8	30.0	-	0.6	1.0	Mn 0.8
Monel B	0.10	1.25	0.60	28.0	rest/bal	0.30	-	-	31.0	-	-	1.2	Mn1.0;S0,04
Hastelloy B2	0.02	1.0	1.0	26.0-30.0	rest/bal	-	-	-	-	-	-	2.0	Mn1.0;Si0.10
Hastelloy C	0.07	1.25	16.0	17.0	rest/bal	0.30	40	-	-	-	-	5.75	Mn 1.0;Si 0 0.70
Hadselloy C4	0.015	2.0	14.0-18.0	140-17.0	rest/bal	-	-	-	-	-	0.70	3.0	Mn1.0;Si 00.70
Hastelloy C276	0.02	2.5	140-16.5	15.0-17.0	rest/bal	0.35	3.0-4.5	-	-	-	-	4.0-7.0	Mn 1.0;Si 0.05
Incoloy 800	0.04	-	21.0	-	32.0	-	-	0.3	-	-	0.4	45.0	-
Incoloy 801	0.05	-	20.5	-	32.0	-	-	-	-	-	1.1	45.0	-
Incoloy 802	0.35	-	21.0	-	32.0	-	-	0.6	-	-	0.7	45.0	-
Incoloy 804	0.05	-	29.5	-	41.0	-	-	0.3	-	-	0.6	25.4	-
Incoloy 805	0.12	-	7.5	0.50	36.0	-	-	-	0.10	-	-	rest/bal	Mn 0.60;Si 0.50
Incoloy 810	0.25	-	21.0	-	32.0	-	-	-	0.50	-	-	rest/bal	Mn 0.90; Si 0.80
Incoloy 825	0.04	-	21.0	3.0	42.0	-	-	-	2.0	-	1.0	30.0	-
Incoloy 901	0.05	-	12.5	6.0	rest/bal	-	-	-	-	-	2.9	34.0	Mn 0.24;0.12;00.015
Incoloy 903	0.02	15.0	-	-	38.0	-	-	0.7	-	Nb 3.0	1.4	41.0	-
Incoloy 904	0.02	14.0	-	-	33.0	-	-	-	-	-	1.7	50.0	-
Incoloy 600	0.05	-	15.5	-	75.0	-	-	-	-	-	-	8.0	-
Incoloy 601	0.05	-	23.0	-	60	-	-	1.4	-	-	-	14.0	-
Incoloy 610	0.20	-	15.5	-	rest/bal	-	-	-	0.50	Nb 1.0	-	9.0	Mn0.90;Si 2.0
Incoloy 617	0.07	12.5	22.5	9.0	54.0	-	-	1.0	-	-	-	-	-
Incoloy 625	0.05	-	21.5	9.0	61.0	-	-	0.60	-	Nb 3.65	0.60	2.5	Mn 05; Si 0.50
Incoloy671	0.07	12.5	22.5	9.0	51.0	-	-	-	-	-	0.35	-	-
Incoloy 700	0.12	28.5	15.0	3.75	46.0	-	-	3.0	0.05	-	2.20	0.70	Mn 0.10; Si 0.30
Incoloy 702	0.04	-	15.6	-	rest/bal	-	-	3.4	0.10	-	0.70	0.35	Mn 0.05; Si 0.20
Incoloy 705	0.30	-	15.5	-	rest/bal	-	-	-	0.50	-	-	8.0	Mn 0.90; Si 5.5

CHEMICAL COMPOSITION OF TITANIUM / NICKEL BASE ALLOYS

Grade	UNS Designation	C % Max	Mn % Max	P % Max	S % Max	Si% -	Ni %	Co %	Cu %	Ag%	Fe %	Pb %	Zn % Max	N %	Ti % Max	H % Max	O %
70/30 Cu-Nu	C 71500	0.05	1.0	0.02	0.02	-	29.0-33.0	-	-	-	0.40-1.0	0.02	0.50	-	-	-	-
90/10 Cu-Ni	C 70600	0.05	1.0	0.02	0.02	-	9.0-11.0	-	-	-	1.0-1.8	0.02	0.50	-	-	-	-
Titanium Gr. 2	R 50400	0.08	0.03	-	-	-	-	-	-	-	0.30	-	-	-	-	-	0.25
Titanium Gr. 1	R 50250	0.08	0.03	-	-	-	-	-	-	-	0.20	-	-	-	-	0.015	0.18
Type 17-4PH	-	0.07	1.00	0.04	0.03	1.00	3.00-5.00	3.00-5.00	0.15-0.45	-	-	-	-	-	-	-	-
Nickel 200	2200	0.15	0.35	-	0.01	0.35	99.0	-	-	-	0.40	-	-	-	-	-	-
Nickel 201	2201	-	0.35	-	0.01	0.35	99.0	-	0.25	-	0.40	-	-	-	-	-	-



STAINLESS STEEL

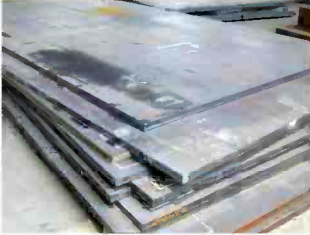
CARBON STEEL

ALLOY STEEL

NICKEL ALLOYS



NIKO STEEL CENTRE



SHEETS, PLATES & COILS

Size :

- Sheets** : 0.8mm to 4mm thk. in 1000 upto 2000 mm Width & 2000 upto 6000 Length
- Plates** : 5mm to 100 mm thk. In 1000 upto 2000 mm Width & 2000 upto 8000 Length
- Coils** : 0.1 mm thk. to 12mm thk. in 10mm upto 1500 Width
- Foils** : 0.01 mm thk. to 0.3 mm thk. in any width
- Strips** : 1mm thk. to 100 mm thk. in 10 mm upto 900 mm Width & 1000 upto 6000 Length

Type :

Finish : HR No.1, 2B, BA, Matt, Matt+1 side PVC, BA + 1side PVC, Chequered

Materials :

- Stainless Steel, Carbon Steel, Alloy Steel, BQ Plates, Duplex Steel,
- Copper, Brass, Aluminium, Hast Alloy, Titanium, Monel, Inconel, Nickel, etc.

Specification : ASTM, AISI, ASME, DIN, UNS etc.

ROUND BAR, HEX, SQUARE

Size :

- Bright Bars** : from 5mm Dia upto 350mm Dia
- Black Bars** : from 16mm Dia upto 350mm Dia
- Square Bars** : from 5mm Dia upto 250mm Dia
- Hex Bars** : from 5mm Dia upto 150mm Dia
- Wires** : 0.1mm Dia to 5mm Dia

Specification :

Condition : Rolled, Forged, Annealed, Picked, Hot Rolled, Cold Roll

Grades :

Stainless Steel : 304/304, 316/316L/316Ti, 321, 310/310S, 317/317L, 347, 17-4Ph.
15-5Ph, 904L, 410, 420, 430, 431, 430F, 416, 440C etc.

Copper, Brass, Aluminium, Hast Alloy, Titanium, Monel, Inconel, Nickel, etc.

Duplex Steel : UNS 31803, UNS 32205, UNS 32750, UNS 32760

Alloy Steel : F5, F9, F11, F22, F91

Carbon Steel, Mild Steel, Boiler Quality Plates

Specification : ASTM, AISI, ASME, DIN, UNS etc.



STAINLESS STEEL

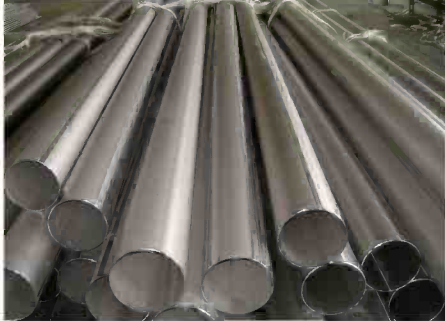
CARBON STEEL

ALLOY STEEL

NICKEL ALLOYS



NIKO STEEL CENTRE



PIPES & TUBES

Size :

Pipes : 1/8" NB, Upto 48" NB. in Sch 5, 10, 40, 80, 160, XS, XXS

Tubes : 1/4" O.D. upto 12" O.D. minimum 0.5 mm thk.

Types :

Forms : ERW & Seamless

Shapes : Round, Square, Rectangular, Triangular, Oval

Types :

Stainless Steel : 304/304L, 316/316L/316Ti, 321, 310/310S, 317/317L, 347, etc.

Copper, Brass, Aluminium, Hast Alloy, Titanium, Monel, Inconel, Nickel, etc.

Duplex Steel : UNS 31083, UNS 32205, UNS 32750, UNS 32760

Alloy Steel : P1, P5, P9, P11, P12, P22, P23, P91

Carbon Steel, Mild Steel

Specification : ASTM, AISI, ASME, DIN, UNS etc.



STAINLESS STEEL

CARBON STEEL

ALLOY STEEL

NICKEL ALLOYS



NIKO STEEL CENTRE

C.S / A.S PIPES AND TUBES SCHEDULE DIMENSIONS, WALL THICKNESS, WT. / MTR. (KG)

Nominal Pipe Size	ANSI B 36.10										ANSI B 36.19																											
	Schedule 10	Schedule 20	Schedule 30	Schedule STD	Schedule 40	Schedule 60	Schedule XS	Schedule 80	Schedule 100	Schedule 120	Schedule 140	Schedule 160	Schedule XXS	Schedule 5S	Schedule 10S	Schedule 40S	Schedule 80S																					
mm	mm	mm	mm	mm	mm	mm	mm	mm	mm	mm	mm	mm	mm	mm	mm	mm	mm	mm																				
1/4"	13.7			2.24	0.83		3.02	0.80	3.02	0.80					1.65	0.50	2.24	0.64	3.02	0.81																		
3/8"	17.1			2.31	0.84		3.20	1.10	3.20	1.10					1.65	0.64	2.31	0.86	3.20	1.12																		
1/2"	21.3			2.77	1.27		3.73	1.62	3.73	1.62	4.78	1.95	7.47	2.55	1.65	0.81	2.11	1.02	2.77	1.29	3.73	1.65																
3/4"	26.7			2.87	1.69		3.91	2.20	3.91	2.20	5.56	2.90	7.82	3.64	1.65	1.03	2.11	1.30	2.87	1.71	3.91	2.23																
1"	33.4			3.38	2.50		4.55	3.24	4.55	3.24	6.35	4.24	9.09	5.45	1.65	1.31	2.77	2.13	3.38	2.54	4.55	3.29																
1 1/4"	42.2			3.56	3.39	3.56	4.85	4.47	4.85	4.47	6.35	5.61	9.70	7.77	1.65	1.68	2.77	2.73	3.56	3.44	4.85	4.53																
1 1/2"	48.3			3.68	4.05	3.68	5.08	5.41	5.08	5.41	7.14	7.25	10.15	9.56	1.65	1.93	2.77	3.16	3.68	4.11	5.08	5.49																
2"	60.3			3.91	5.44	3.91	5.54	7.48	5.54	7.48	8.74	11.11	11.07	13.44	1.65	2.42	2.77	3.99	3.91	5.52	5.54	7.60																
2 1/2"	73.0			5.16	8.63	5.16	7.01	11.41	7.01	11.41	9.53	14.92	14.02	20.39	2.11	3.75	3.05	5.35	5.16	8.77	7.01	11.59																
3"	88.9			5.49	11.29	5.49	7.62	15.27	7.62	15.27	11.13	21.35	15.24	27.68	2.11	4.59	3.05	6.56	5.49	11.47	7.62	15.51																
3 1/2"	101.6			5.74	13.57	5.74	8.08	18.63	8.08	18.63					2.11	5.26	3.05	7.53	5.74	13.78	8.08	18.92																
4"	114.3			6.02	16.07	6.02	8.56	22.32	8.56	22.32	11.13	28.32	17.12	41.03	2.11	5.93	3.05	8.50	6.02	16.32	8.56	22.67																
5"	141.3			6.55	21.77	6.55	9.53	30.97	9.53	30.97	12.70	40.28	19.05	57.43	2.77	9.61	3.40	11.74	6.55	22.10	9.53	31.44																
6"	168.3			7.11	28.26	7.11	10.97	42.56	10.97	42.56	14.27	54.20	21.95	79.22	2.77	11.48	3.40	14.04	7.11	28.70	10.97	43.22																
8"	219.1	6.35	33.31	7.04	36.81	8.18	42.55	8.18	42.55	10.31	53.08	12.70	64.64	12.70	64.64	15.09	75.92	18.26	90.44	20.62	100.90	23.01	111.20	22.23	107.90	2.77	14.9	3.80	20.12	8.18	43.20	12.70	65.64					
10"	273.0	6.35	41.77	7.80	51.03	9.27	60.31	9.27	60.31	12.70	81.55	12.70	81.55	15.09	96.01	18.26	114.70	21.44	133.00	25.40	155.10	3.40	22.95	4.19	28.20	9.27	61.22	12.70	82.78									
12"	323.8	6.35	49.73	8.38	65.20	9.53	73.88	10.31	79.73	14.27	108.90	12.70	97.46	17.48	135.00	21.44	159.90	25.40	186.90	28.58	208.10	33.20	238.70	25.40	186.90	3.96	31.71	4.57	36.53	9.53	74.94	12.70	98.96					
14"	355.6	6.35	54.69	9.53	81.33	9.53	81.33	11.13	94.55	15.09	126.70	12.70	107.30	19.05	156.10	23.83	194.90	27.79	224.60	31.75	253.50	35.71	281.70			3.96	34.87	4.78	41.99	9.53	82.50	12.70	109.05					
16"	406.4	6.35	62.64	9.53	93.27	9.53	93.27	12.70	123.30	16.66	160.10	12.70	123.30	21.44	203.50	28.19	245.50	30.96	286.60	36.53	333.10	40.49	365.30			4.19	42.20	4.78	48.07	9.53	94.61	12.70	125.20					
18"	457.2	6.35	70.57	9.53	111.13	122.30	9.53	105.10	14.27	155.80	19.05	205.70	12.70	198.10	23.83	254.50	29.36	309.60	34.93	363.50	39.67	408.20	45.24	459.30			4.19	47.53	4.78	54.15	9.53	106.83	12.70	141.35				
20"	508.0	6.35	78.55	9.53	117.10	12.70	155.10	9.53	117.10	15.09	183.40	20.62	247.80	12.70	155.10	26.19	311.10	32.54	381.50	38.10	441.40	44.45	508.10	50.01	564.80			4.78	60.23	5.54	69.70	9.53	118.95	12.70	157.51			
22"	558.8	6.35	86.54	9.53	129.10	12.70	171.00	9.53	129.10		22.23	294.20	12.70	171.00	28.58	373.80	34.93	451.40	41.28	527.00	47.63	600.60	605.90	672.20			4.78	66.31	5.54	76.75	9.53	131.07	12.70	173.66				
24"	609.6	6.35	94.53	9.53	141.10	14.27	209.60	9.53	141.10	17.48	255.40	24.61	355.20	12.70	187.00	30.96	442.00	38.88	547.70	46.02	640.00	82.37	720.10	959.54	808.20			5.54	83.80	6.35	95.92	9.53	143.20	12.70	189.82			
26"	660.4	7.92	127.30	12.70	202.70																																	
28"	711.2	7.92	137.30	12.70	218.60	15.88	217.20	9.53	164.80																													
30"	762.0	7.92	147.20	12.70	234.60	15.88	231.10	9.53	176.80																													
32"	812.8	7.92	157.20	12.70	250.60	15.88	312.10	9.53	188.80	17.48	342.90																											
34"	863.6	7.92	167.20	12.70	266.60	15.88	332.10	9.53	200.30	17.48	364.90																											
36"	914.4	7.92	176.90	12.70	282.20	15.88	351.70	9.53	212.50	19.05	420.40																											

Formulae

Weight of Steel Pipes & Tubes
 $OD(mm) - W.T.(mm) \times W.T.(mm) \times 0.02466 = \text{kg per meter.}$
 Feet = meter $\times 3.281$

ALL DIMENSIONS ARE IN KILOGRAMS & METERS

STAINLESS STEEL

CARBON STEEL

ALLOY STEEL

NICKEL ALLOYS



NIKO STEEL CENTRE

MILD STEEL PIPES CONFIRM TO IS : 1239 (PART I) - 1979

Nominal Bore		Outside Diameter		Light		Medium		Heavy	
Inch	mm	In	mm	Thickness	Weight	Thickness	Weight	Thickness	Weight
				mm	kg/mtr	mm	Kg/Mtr.	mm	Kg/Mtr.
1/8"	3 mm	0.406	10.32	1.80	0.361	2.00	0.407	2.65	0.493
1/4"	6 mm	0.532	13.49	1.80	0.517	2.35	0.650	2.90	0.769
3/8"	10 mm	0.872	17.10	1.80	0.874	2.35	0.852	2.90	1.02
1/2"	15 mm	0.844	21.43	2.00	0.952	2.65	1.122	3.25	1.45
3/4"	20 mm	1.094	27.20	2.35	1.410	2.65	1.580	3.25	1.90
1"	25 mm	1.312	33.80	2.65	2.010	3.25	2.440	4.05	2.97
1.1/4"	32 mm	1.656	42.90	2.65	2.580	3.25	3.140	4.05	3.84
1.1/2"	40 mm	1.906	48.40	2.90	3.250	3.25	3.610	4.05	4.43
2"	50 mm	2.375	60.30	2.90	4.110	3.65	5.100	4.47	6.17
2.1/2"	65 mm	3.004	76.20	3.25	5.840	3.65	6.610	4.47	7.90
3"	80 mm	3.500	88.90	3.25	6.810	4.05	8.470	4.85	10.1
4"	100 mm	4.500	114.30	3.65	9.890	4.50	12.10	5.40	14.4
5"	125 mm	5.500	139.70	-	-	4.85	16.20	5.40	17.8
6"	150 mm	6.500	165.10	-	-	4.85	19.20	5.40	21.2

BIG DIAMETER ERW PIPES CONFIRM TO IS 3589									
Wall Thickness in mm	Nominal Bore 7" NB 193.7 mm OD	Nominal Bore 8" NB 219.1 mm OD	Nominal Bore 10" NB 273 mm OD	Nominal Bore 12" NB 323.7 mm OD	Nominal Bore 14" NB 355.6 mm OD	Nominal Bore 16" NB 406.4 mm OD	Nominal Bore 18" NB 457 mm OD	Nominal Bore 20" NB 508 mm OD	
	kg/mtr	kg/mtr	kg/mtr	kg/mtr	kg/mtr	kg/mtr	kg/mtr	kg/mtr	kg/mtr
4.85	22.59	25.62	32.07	38.13	-	-	-	-	-
5.20	24.17	27.43	34.34	40.85	-	-	-	-	-
5.60	26.00	29.28	36.93	43.93	48.11	-	-	-	-
6.00	27.88	31.53	39.50	47.02	51.49	61.00	69.00	-	-
6.35	29.34	33.28	41.73	49.67	54.43	62.35	70.50	78.50	-
7.01	32.27	36.76	46.43	55.45	61.82	69.04	-	-	-
7.94	-	41.00	50.95	61.85	67.98	77.92	87.80	-	-
8.18	-	42.56	53.42	65.12	-	-	-	-	-
9.53	-	51.50	60.24	73.75	81.21	93.13	105.00	117.00	-
12.70	-	-	-	107.28	123.30	139.00	-	-	155.00

MAXIMUM PERMISSIBLE PRESSURE AND TEMPERATURE FOR TUBES WITH STEEL COUPLINGS OR SCREWED AND SOCKETED JOINTS

Tolerance on Thickness and Weight : as per IS 1239
The following manufacturing tolerance shall be permitted on the tubes and sockets.

- (a) Thickness:
- (1) Butt welded Light tubes
 - + Not limited
 - 8 percent
 - + Not Limited
 - 10 percent
 - + Not Limited
 - 12.5 percent
 - Medium and Heavy tubes
 - (2) Seamless tubes
- (b) Weight:
- (1) Single tube (light series)
 - + 10 percent
 - 8 percent
 - + 10 percent
 - (2) Single tube (medium and heavy series)

Nominal Bore mm	Maximum Permissible Pressure		Maximum Permissible Temperature	
	N/mm ²	Kg./cm ²	°C	
Upto and Including 25 mm	1.20	12.24	260	
Over 25 mm upto and Including 40 mm	1.03	10.50	260	
Over 40 mm upto and Including 80 mm	0.86	8.77	260	
Over 80 mm upto and Including 100 mm	0.69	7.04	260	
Over 100 mm upto and Including 125 mm	0.83	8.47	177	
Over 125 mm upto and Including 150 mm	0.69	7.04	171	
For tubes fitted with appropriate flanges of suitably butt welded together, the Max. permissible pressure shall be 21.00 Kg/cm and Max. permissible temp. 260°C	0.50	5.10	160	



STAINLESS STEEL

CARBON STEEL

ALLOY STEEL

NICKEL ALLOYS



NIKO STEEL CENTRE

BUTT WELD FITTINGS TO ANSI B16.9 & 16.28

Dimensions

Dimensions of Elbows, Tees, Caps and Reducers from ½" NB to 60" short Radius Elbows and Return Bends from Bends from 1" to 24" N.B. and Long Radius Bends from ½" N.B. to 24 are as stated in the current editions of ANSI B 16.9 and B-16.28 wall thickness are as listed ANSI B 36.10M.

Material

Stainless Steel : ASTM A403, WP 304 / 304L / 304H / 316 / 316L / 317 / 317L / 321 / 310 / 347 / 904L etc.

Carbon Steel : ASTM A234 WPB / A420 WPL3 / A420 / WPL6 / MSS-SP-75 WPHY 42 / 46 / 52 / 56 / 60 / 65 / 70

Alloy Steel : ASTM A234 WP1 / WP5 / WP9 / WP11 / WP22 / WP91 etc.

Manufacture & Heat Treatment

In accordance with the relevant ASTM or MSS Specification.

Weld Preparation

All fittings have a weld preparation to ANSI B 16.25

Marking

Fittings are marked with : the nominal size (or sizes) ; schedule or wall thickness; material grade; that reference manufacturer's mark. Where the size of fittings does not permit full marking then nominal size(s); schedule or wall thickness; and material grade are omitted.

Test Certificate

Fittings test certificates are available and are supplied with all goods. Test Certificates include full chemical analysis and Mechanical Properties with 3.1 Certificate,

Inspection

All stock is statically sample inspected on receipt. The sampling plan is selected from BS6001.

OTHER PRODUCTS AVAILABLE

Other Schedules / wall thicknesses Nickel base alloys, Copper, Nickel & Duplex are available from short delivery time.



STAINLESS STEEL

CARBON STEEL

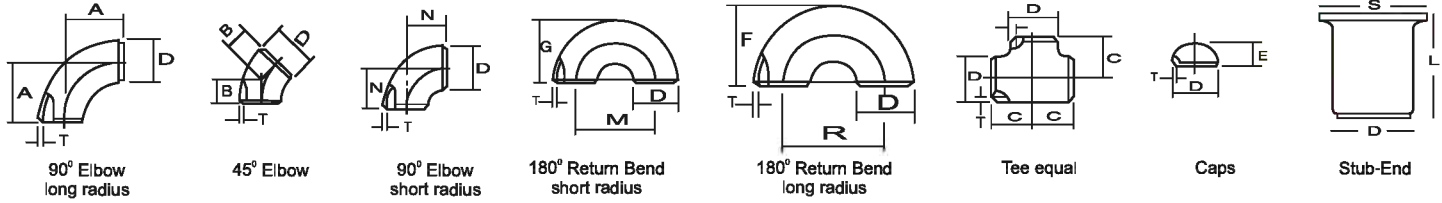
ALLOY STEEL

NICKEL ALLOYS



NIKO STEEL CENTRE

BUTT WELDING PIPE FITTING DIMENSIONAL STANDARD ANSI B-16.9 / 16.28 / MSS SP-43



Nominal Pipe Size		Outside Diameter	Center to Face				Back to Face			Center to Center			Length 'L'	
Inch.	mm	D	A	B	C	N	E	F	G	R	M	S	MSS SP43	ANSI B 16.9
1/2	15	21.3	19	16	25	—	25	48	—	38	—	34.9	50.8	76.2
3/4	20	26.7	29	11	29	—	25	43	—	57	—	42.8	50.8	76.2
1	25	33.4	38	22	38	25	38	56	41	76	51	50.8	50.8	101.6
1 1/4	32	42.2	48	25	48	32	38	70	52	95	64	63.5	50.8	101.6
1 1/2	40	48.3	57	29	57	38	38	83	62	114	76	73	50.8	101.6
2	50	60.3	76	35	64	51	38	106	81	152	102	92	63.5	152.4
2 1/2	65	73.0	95	44	76	64	38	132	100	191	127	104.8	63.5	152.4
3	80	88.9	114	51	86	76	51	159	121	229	152	127	63.5	152.4
3 1/2	90	101.6	133	57	95	89	64	184	140	267	178	139.7	76.2	152.4
4	100	114.3	152	64	105	102	64	210	159	305	203	157.2	76.2	152.4
5	125	141.3	190	79	124	127	76	262	197	381	254	185.7	76.2	203.2
6	150	168.3	229	95	143	152	89	313	237	457	305	215.9	88.9	203.2
8	200	219.1	305	127	178	203	102	414	313	610	406	270	101.6	203.2
10	250	273.1	381	159	216	254	127	518	391	762	508	324	127.0	254.0
12	300	323.9	457	190	254	305	152	619	467	914	610	381	152.4	254.0
14	350	355.6	533	222	279	356	165	711	533	1067	711	412.8	152.4	305.0
16	400	406.4	610	254	305	406	178	813	610	1219	813	470	152.4	305.0
18	450	457.2	686	286	343	457	203	914	686	1372	914	533.4	152.4	305.0
20	500	508.0	762	318	381	508	229	1016	762	1524	1016	584.2	152.4	305.0
22	550	559.0	838	343	419	559	254	1118	838	1676	1118	614.4	152.4	305.0
24	600	610.0	914	381	432	610	267	1219	914	1829	1219	692.2	152.4	305.0
26	650	660.0	991	406	495	660	267	—	—	—	—	—	—	—
28	700	711.0	1067	438	521	711	267	—	—	—	—	—	—	—
30	750	762.0	1143	470	559	762	267	—	—	—	—	—	—	—
32	800	813.0	1219	502	597	813	267	—	—	—	—	—	—	—
34	850	864.0	1295	533	635	864	267	—	—	—	—	—	—	—
36	900	914.0	1372	565	673	914	267	—	—	—	—	—	—	—
38	950	965.0	1448	600	711	965	305	—	—	—	—	—	—	—
40	1000	1016.0	1524	632	749	1016	305	—	—	—	—	—	—	—
42	1050	1067.0	1600	660	762	1067	305	—	—	—	—	—	—	—
44	1100	1118.0	1676	695	813	1118	343	—	—	—	—	—	—	—
46	1150	1168.0	1753	727	851	1168	343	—	—	—	—	—	—	—
48	1200	1219.0	1829	759	889	1219	343	—	—	—	—	—	—	—



STAINLESS STEEL

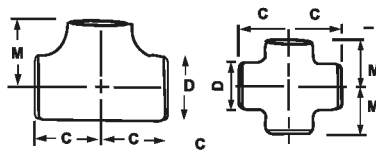
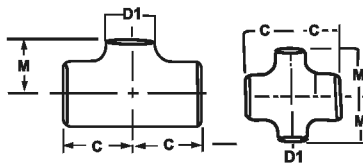
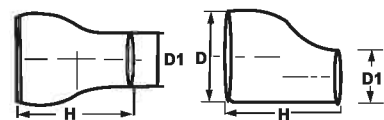
CARBON STEEL

ALLOY STEEL

NICKEL ALLOYS



NIKO STEEL CENTRE

DIMENSIONS OF BUTT WELDING FITTINGS TO ANSI B 16.9 (upto 48") / MSS SP 43 (upto 24")
EQUAL TEE & CROSS

UNEQUAL TEE & CROSS

CONCENTRIC & ECCENTRIC REDUCERS


Nominal Pipe Size	Center to End Run	Center to End Branch	Length	Nominal Pipe Size	Center to End Run	Center to End Branch	Length	Nominal Pipe Size	Center to End Run	Center to End Branch	Length	Nominal Pipe Size	Center to End Run	Center to End Branch	Length	Nominal Pipe Size	Center to End Run	Center to End Branch	Length	Nominal Pipe Size	Center to End Run	Center to End Branch	Length	
D X D1	C	M	H	D X D1	C	M	H	D X D1	C	M	H	D X D1	C	M	H	D X D1	C	M	H	D X D1	C	M	H	
1x1	38	38	-	5x5	124	124	-	18X18	343	343	-	30X30	559	559	-	38X38	711	711	-	44X44	813	762	-	
1x1/2	38	38	51	5x2	124	105	127	18X16	343	330	381	30X28	559	546	610	38X36	711	711	610	44X42	813	762	610	
1x3/4	38	38	51	5X2 1/2	124	108	127	18X14	343	330	381	30X26	559	546	610	38X34	711	698	610	44X40	813	749	610	
1 1/4x1 1/4	48	48	51	5X3	124	111	127	18X12	343	321	381	30X24	559	533	610	38X32	711	686	610	44X38	813	737	610	
1 1/4x1/2	48	48	51	5X3 1/2	124	114	127	18X10	343	308	381	30X22	559	521	610	38X30	711	673	610	44X36	813	724	610	
1 1/4x3/4	48	48	51	5X4	124	117	127	18X8	343	298	(381)	30X20	559	(508)	(610)	38X28	711	648	610	44X34	813	724	(610)	
1 1/4x1	48	48	51	6x6	143	143	-	20x20	381	381	-	30X18	559	(495)	(610)	38X26	711	648	610	44X32	813	711	(610)	
1 1/2x1 1/2	57	57	-	6x2 1/2	143	121	140	20x18	381	368	508	30X16	559	(483)	(610)	38X24	711	635	(610)	44X30	813	711	(610)	
1 1/2x1/2	57	57	64	6x3	143	124	140	20x16	381	356	508	30X14	559	(483)	(610)	38X22	711	622	(610)	44X28	813	698	(610)	
1 1/2x3/4	57	57	64	6x3 1/2	143	127	140	20x14	381	356	508	30X12	559	(473)	(610)	38X20	711	610	(610)	44X26	813	698	(610)	
1 1/2x1	57	57	64	6x4	143	130	140	20x12	381	346	508	30X10	559	460	(610)	38X18	711	597	(610)	44X24	813	698	(610)	
1 1/2x1 1/4	57	57	64	6x5	143	137	140	20x10	381	333	(508)	32x32	597	597	-	40x40	749	749	-	44X22	813	686	(610)	
2x2	64	64	-	8x8	178	178	-	20x8	381	324	(508)	32x30	597	584	610	40x38	749	749	610	44X20	813	686	(610)	
2x3/4	64	44	76	8x6	178	168	152	22x22	419	419	-	32x28	597	572	610	40x36	749	737	610	46x46	851	800	-	
2x1	64	51	76	8x5	178	162	152	22x20	419	406	508	32x26	597	572	610	40x34	749	724	610	46x44	851	800	711	
2x1 1/4	64	57	76	8x4	178	156	152	22x18	419	384	508	32x24	597	559	610	40x32	749	711	610	46x42	851	787	711	
2x1 1/2	64	60	76	8x3 1/2	178	152	152	22x16	419	381	508	32x22	597	546	(610)	40x30	749	698	610	46x40	851	775	711	
2 1/2x2 1/2	76	76	-	10x10	216	216	-	22x14	419	381	508	32x20	597	533	(610)	40x28	749	673	(610)	46x38	851	762	711	
2 1/2x1	76	57	89	10x8	216	203	178	22x12	419	371	(508)	32x18	597	521	(610)	40x26	794	673	(610)	46x36	851	762	(711)	
2 1/2x1 1/4	76	64	89	10x6	216	194	178	22x10	419	359	(508)	32x16	597	508	(610)	40x24	749	660	(610)	46x34	851	749	(711)	
2 1/2x1 1/2	76	67	89	10x5	216	191	178	24x24	432	432	-	32x14	597	508	(610)	40x22	749	648	(610)	46x32	851	749	(711)	
2 1/2x2	76	70	89	10x4	216	184	178	24x22	432	432	508	34x34	635	635	-	40x20	749	635	(610)	46x30	851	737	(711)	
3x3	89	89	-	12x12	254	254	-	24x20	432	432	508	34x32	635	622	610	40x18	749	622	(610)	46x28	851	737	(711)	
3x1 1/4	86	70	89	12x10	254	241	203	24x18	432	419	508	34x30	635	610	610	42x42	762	711	-	46x26	851	737	(711)	
3x1 1/2	86	73	89	12x8	254	229	203	24x16	432	406	508	34x28	635	597	610	42x40	762	711	610	46x24	851	724	(711)	
3x2	86	76	89	12x6	254	219	203	24x14	432	406	(508)	34x26	635	597	610	42x38	762	711	610	46x22	851	724	(711)	
3x2 1/2	86	83	89	12x5	254	216	203	24x12	432	397	(508)	34x24	635	584	(610)	42x36	762	711	610	48x48	889	838	-	
3 1/2x3 1/2	95	95	-	14x14	279	279	-	24x10	432	384	(508)	34x22	635	572	(610)	42x34	762	711	610	48x46	889	838	711	
3 1/2x1 1/2	95	79	102	14x12	279	270	330	26x26	495	495	-	34x20	635	559	(610)	42x32	762	711	610	48x44	889	838	711	
3 1/2x2	95	83	102	14x10	279	257	330	26x24	495	483	610	34x18	635	546	(610)	42x30	762	711	610	48x42	889	813	711	
3 1/2x2 1/2	95	89	102	14x8	279	248	330	26x22	495	470	610	34x16	635	533	(610)	42x28	762	698	(610)	48x40	889	813	711	
3 1/2x3	95	92	102	14x6	279	238	330	26x20	495	457	610	36x36	673	673	-	42x26	762	698	(610)	48x38	889	813	(711)	
4x4	105	105	-	16x16	305	305	-	26x18	495	444	610	36x34	673	660	610	42x24	762	660	(610)	48x36	889	787	(711)	
4x1 1/2	105	86	102	16x14	305	305	356	26x16	495	432	(610)	36x32	673	648	610	42x22	762	660	(610)	48x34	889	787	(711)	
4x2	105	89	102	16x12	305	295	356	26x14	495	422	(610)	36x30	673	635	610	42x20	762	660	(610)	48x32	889	787	(711)	
4x2 1/2	105	95	102	16x10	305	283	356	26x12	495	422	(610)	36x28	673	622	610	42x18	762	648	(610)	48x30	889	787	(711)	
4x3	105	98	102	16x8	305	273	356	28x28	521	521	-	36x26	673	622	610	42x16	762	635	(610)	48x28	889	762	(711)	
4x3 1/2	105	102	102	16x6	305	264	(356)	28x26	521	521	610	36x24	673	610	(610)	48x26	889	762	(711)	48x26	889	762	(711)	
								28x24	521	508	610	36x22	673	597	(610)	48x24	889	737	(711)	48x24	889	737	(711)	
								28x22	521	495	610	36x20	673	584	(610)	48x22	889	737	(711)	48x22	889	737	(711)	
								28x20	521	483	610	36x18	673	572	(610)									
								28x18	521	470	(610)	36x16	673	559	(610)									
								28x16	521	457	(610)													
								28x14	521	457	(610)													
								28x12	521	448	(610)													

STAINLESS STEEL

CARBON STEEL

ALLOY STEEL

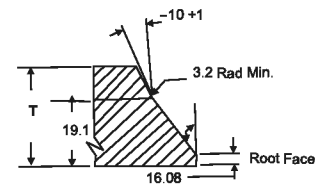
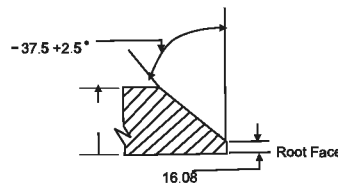
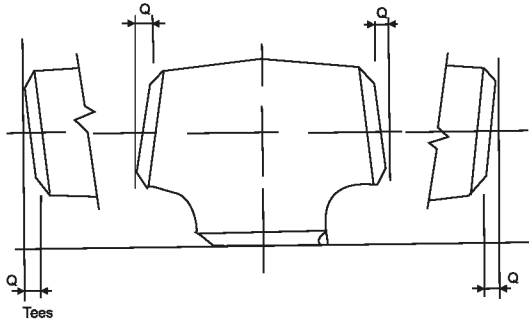
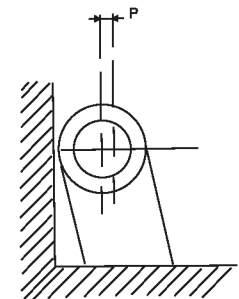
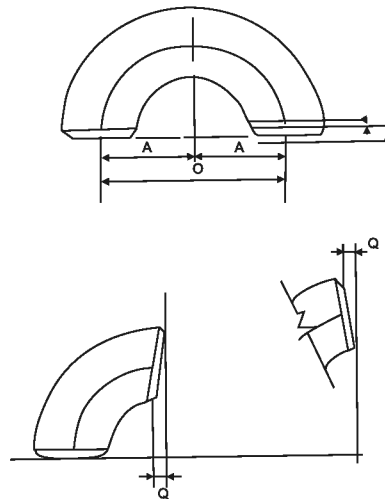
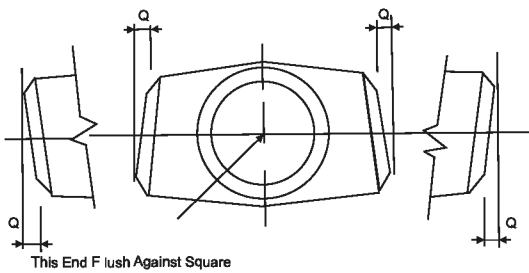
NICKEL ALLOYS



NIKO STEEL CENTRE

DIMENSIONAL TOLERANCE ANSI B16.9/B16.28/MSS SP-43

ALL FITTINGS				90°/60°/45° 30° ELBOWS & TEES		REDUCERS		180° RETURNS				CAPS		ANGULARITY TOLERANCE					
Nominal Pipe size INCH/MM	Outside Diameter at Bevel	Inside Dia Meter	Wall Thickness at End	Center to End	Overall Length Dimension	Center to End	Back to Face Dimension	Alignment of End Dimensions	Overall Length	Nominal Pipe Size	Off Angel Inch/mm	Off Plane							
D		T		A,B,C,M		H		O		K		U		E		Q		P	
(1) B16.9	MSS SP43	(2) B16.9	B16.9	MSS SP43	B16.9	MSS SP43	B16.9	MSS SP43	B16.9	MSS SP43	B16.9	MSS SP43	B16.9	MSS SP43	B16.9	MSS SP75	B16.9		
1/2" - 2 1/2" 15 - 65	+1.6 -0.8	+0.80	±0.8	Not Less Than 87.5% Nominal Thk	Not Less Than 87.5% Nominal Thk	FROM 1/2" TO 18	FROM 3/4"	FROM 1/2" - 24"	FROM 1/2" - 8"							1/2" - 4" 15 - 100	+1	16" - 24" 400 - 600 1.6	±2
3" - 3 1/2" 80 - 90	+1.6					±2	±1.60	±2	±1.60	±6	±6.35	±6.0	±6.4	±1	±0.8	±3	±3.17		5" - 8" 125 - 200
4" 100	+2.4 -1.6	+1.60 -0.80	±1.6	Not Less Than 87.5% Nominal Thk	Not Less Than 87.5% Nominal Thk	±2.40	10" - 24" +2.38 250 - 600	±10	±10							10" - 12" 250 - 300	±3	26" - 36" 650 - 900 2.4	±5
5" - 6" 125 - 150																±6	±6.35		±3
8" 200																18" - 24" 450 - 600	+4		±10
10" - 18" 250 - 450	+4 -3.2	+2.38 -0.80	±3.2													26" - 30" 650 - 750	±5		±10
20" - 24" 500 - 600	+6.4 -4.8	3.17 0.79	±4.8													32" - 42" 800 - 1050	±5		±13
26" - 30" 650 - 750	+6.4 -4.8	+4.8															44" - 48" 1100 - 1200	±5	
32" - 48" 800 - 1200	+6.4 -4.8															42" - 48" 1050 - 1200	±5		±20



STAINLESS STEEL

CARBON STEEL

ALLOY STEEL

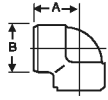
NICKEL ALLOYS



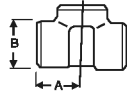
NIKO STEEL CENTRE

DIMENSION IN MM OF FORGED SCREWED FITTINGS TO ANSI B-16.11 THREADED TO ASA B 2.1

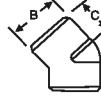
90° ELBOWS



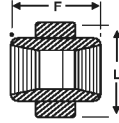
TEE



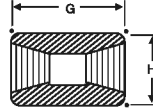
45° ELBOW



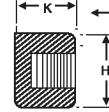
UNION



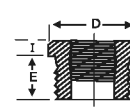
COUPLING



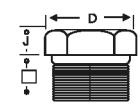
PIPE CAP



BUSHING



HEX HEAD PLUG

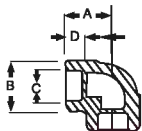


HALF COUPLING = G/2

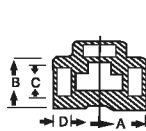
NOM BORE	PIPE O.D.	3000 L.B.S.						COMMON FACTORS						6000 L.B.S.					
		A	B	C	G	H	K	D	E	F	I	J	L	A	B	C	G	H	K
1/8"	10.3	21	22	17	32	16	19	11	10	40	-	6	-	25	25	19	32	22	-
1/4"	13.7	25	25	19	35	19	25	16	11	43	3	6	32	29	33	22	35	25	27
3/8"	17.2	29	33	22	38	22	25	17.5	13	48	4	8	38	33	38	25	38	32	27
1/2"	21.3	33	38	25	48	29	32	22	15	51	5	8	46	38	46	29	48	38	33
3/4"	26.7	38	46	29	51	35	37	27	16	57	6	10	51	44	56	33	51	44	38
1"	33.4	44	56	33	60	44	41	35	19	64	6	10	60	51	62	35	60	57	43
1 1/4"	42.2	51	62	35	67	57	44	44.5	21	70	7	14	72	60	75	43	67	64	46
1 1/2"	48.3	60	75	43	79	64	44	51	21	79	8	16	80	64	84	44	79	76	48
2"	60.3	64	84	45	86	76	48	63.5	22	88	9	17	94	83	102	52	86	92	51
2 1/2"	73.02	83	102	52	92	92	60	76	27	118	10	21	122	95	121	64	92	108	64
3"	89.0	95	121	64	108	108	65	89	29	121	10	25	140	106	146	79	108	127	68
4"	114.5	114	152	79	121	140	68	117.5	32	150	13	25	180	114	152	79	121	159	75

SOCKET WELD FITTING TO ANSI B-16.11

90° ELBOWS



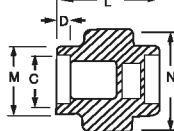
TEE



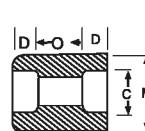
45° ELBOW



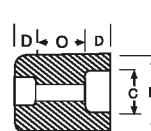
UNION



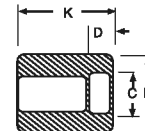
COUPLING



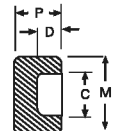
REDUCER



HALF COUPLING



CAP



NOM BORE	PIPE O.D.	3000 L.B.S.								COMMON FACTORS				6000 L.B.S.					
		A	B	K	J	L	M	N	P	Q	Cmin	Dmin	Omin	Omax	A	B	M	K	N
1/8"	10.3	22	18.5	26	16	40	17.3	32	17.5	10	10.7	10	5	8	22	22	20	25	46
1/4"	13.7	22	22	26	18	43	21.2	32	17.5	10	14.1	10	5	8	27	25	24	25	51
3/8"	17.2	25	25	26	19	48	25.4	36	19	10	17.6	10	3	9	27	28	28	26	60
1/2"	21.3	27	32	30	21	51	31	43	22	10	21.7	10	6	13	31	34	34	31	72
3/4"	26.7	34	38	36	24	57	37	50	25	13	27	13	6	13	37	42	41	35	80
1"	33.4	37	46	40	25	64	45.2	60	27	13	33.8	13	9	17	42	50	50	40	94
1 1/4"	42.2	42	56	40	29	70	55	70	30	13	42.6	13	9	17	47	59	58	41	100
1 1/2"	48.3	47	62	40	30	79	61.4	78	32	13	48.7	13	9	17	53	67	55	43	122
2"	60.3	56	75	52	37	89	75	95	38	13	61.2	16	15	23	59	84	83	55	
2 1/2"	73.02	60	92	52	48	114	91.3	125	38	16	73.8	16	14	24		102		56	
3"	89.00	76	110	52	51	127	108.8	140	44	16	89.8	16	14	24		121		58	
4"	114.50	88	137	58		150	136.9		48	19	115.5	19	14	24		152		64	

DIMENSIONS AND OTHERS SPECIFICATIONS AS PER CUSTOMERS REQUIREMENTS ARE AVAILABLE ON REQUEST

STAINLESS STEEL

CARBON STEEL

ALLOY STEEL

NICKEL ALLOYS



NIKO STEEL CENTRE

FLANGES TO ANSI B16.5 / 16.47 / 16.10 / 16.36 / 16.48

Material

Flanges are forged from material conforming to ASTM A 105 NORMALISED ASTM A 350-LF2, ASTM A694 F52, 65 ASTM A 182 and Duplex Steels, B564, B637, B462 etc.

Dimensions

All dimensions comply with the Standard. Flanges are machined on the outside diameter, bore (and weld preparation of weld necks) and joint face. Bolt holes are drilled Weld prep on weldnecks is to ANSI B16.25.

Marking

Flanges are marked with : the nominal size : class number ; material grade heat WT number' manufacturer's mark.

Test Certificate

Flanges test certificates are available and are supplied with all goods. Test Certificates include full chemical analysis and Mechanical With Carbon Equivalent Properties with 3.1 certificate.

Inspection

All stock is statically sample inspected on receipt.

Manufacturing Capability

Dimensional Standard	Size Range	Rating
ASME / ANSI / B 16.5	½" to 24"	Class 150 to 2500 Lbs
MSS-SP-44	12" to 60"	Class 150 to 900 Lbs
ASME / B16.47 / API 605	26" to 60"	-
ASME / ANSI / B 16.36	1" to 24"	Class 300 to 2500 Lbs
BS 3293	26" to 48"	Class 150 to 600 Lbs
ASME / B 16.48 / API 590	½" to 24"	Class 150 to 2500 Lbs
API 6A	2 1/16" to 30"	2000 Psi to 20000 Psi
DIN	DN10 to DN3600	PN6 to PN 160



STAINLESS STEEL

CARBON STEEL

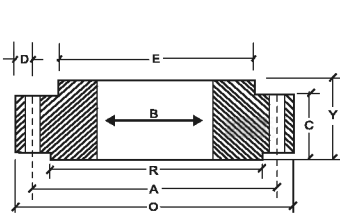
ALLOY STEEL

NICKEL ALLOYS

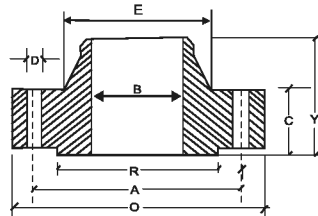


NIKO STEEL CENTRE

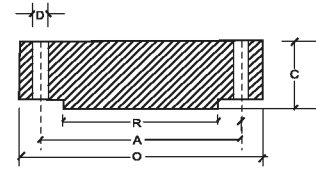
DIMENSIONS OF FORGED FLANGES ANSI 16.5



SLIP-ON FLANGE



WELDING NECK FLANGE



BLIND FLANGE

ASA 150 CLASS

Nominal Pipe Size	Flange Dia	Dia of Bolt Circle	Dia of Bolt Holes	No. of Holes	Thk of Flange	Dia of Hub	Length Through Hub			Dia of Bore		Dia of R/F	Depth of Socket	Pipe Dia	
							S/O & S/W	W/N	L/J	S/O & S/W	L/J				
(MM)	(INCH.)	O	A	D	C	E	Y	Y	Y	B	B	R	F	X	
15	1/2	88.9	60.3	15.9	4	11.1	30.2	15.9	47.6	15.9	22.3	22.9	34.9	9.5	21.33
20	3/4	98.4	69.8	15.9	4	12.7	38.1	15.9	52.4	15.9	27.7	28.2	42.9	11.1	26.67
25	1	107.9	79.4	15.9	4	14.3	49.2	17.5	55.6	17.5	34.5	35.0	50.8	12.7	33.40
32	1 1/4	117.5	88.9	15.9	4	15.9	58.7	20.6	57.1	20.6	43.2	43.7	63.5	14.3	42.16
40	1 1/2	127.0	98.4	15.9	4	17.5	65.1	22.2	61.9	22.2	49.5	50.0	73.0	15.9	48.26
50	2	152.4	120.6	19.0	4	19.0	77.8	25.4	63.5	25.4	62.0	62.5	92.1	17.5	60.31
65	2 1/2	177.8	139.7	19.0	4	22.2	90.5	28.6	69.8	28.6	74.7	75.4	104.8	19.0	73.02
80	3	190.5	152.4	19.0	4	23.8	107.9	30.2	69.8	30.2	90.7	91.4	127.0	20.6	88.90
100	4	228.6	190.5	19.0	8	23.8	134.9	33.3	76.2	33.3	116.1	116.8	157.2	23.8	114.30
125	5	254.0	215.9	22.2	8	23.8	163.5	36.5	88.9	36.5	143.8	144.5	185.7	23.8	141.30
150	6	279.4	241.3	22.2	8	25.4	192.1	39.7	88.9	39.7	170.7	171.4	215.9	27.0	168.27
200	8	342.9	298.4	22.2	8	28.6	246.1	44.4	101.6	44.4	221.5	222.2	269.9	31.7	219.07
250	10	406.4	361.9	25.4	12	30.2	304.8	49.2	101.6	49.2	276.3	277.4	323.8	33.3	273.05
300	12	482.6	431.8	25.4	12	31.8	365.1	55.6	114.3	55.6	327.1	328.2	381.0	39.7	323.85
350	14	533.4	476.2	28.6	12	34.9	400.0	57.1	127.0	79.4	359.1	360.2	412.7	41.3	355.60
400	16	596.9	539.7	28.6	16	36.5	457.2	63.5	127.0	87.3	410.5	411.2	469.9	44.4	406.40
450	18	635.0	577.8	31.7	16	39.7	504.8	68.3	139.7	96.8	461.8	462.3	533.4	49.2	457.20
500	20	698.5	635.0	31.7	20	42.9	558.8	73.0	144.5	103.2	513.1	514.3	584.2	54.0	508.00
600	24	812.8	749.3	34.9	20	47.6	663.6	82.5	152.4	111.1	615.9	615.9	692.1	63.5	609.60

All Dimensions are in Millimeters • Flanges except Lap Joint will be furnished with (1.6mm) Raised Face, which is included in Thickness(C) and Length through Hub(Y).

ASA 300 CLASS

Nominal Pipe Size	Flange Dia	Dia of Bolt Circle	Dia of Bolt Holes	No. of Holes	Thk of Flange	Dia of Hub	Length Through Hub			Dia of Bore		Dia of R/F	Depth of Socket	Pipe Dia	
							S/O & S/W	W/N	L/J	S/O & S/W	L/J				
(MM)	(INCH.)	O	A	D	C	E	Y	Y	Y	B	B	R	F	X	
15	1/2	95.2	66.7	15.9	4	14.3	38.1	22.2	52.4	22.2	22.3	22.9	34.9	9.5	21.33
20	3/4	117.5	82.5	19.0	4	15.9	47.6	25.4	57.1	25.4	27.7	28.2	42.9	11.1	26.67
25	1	123.8	88.9	19.0	4	17.5	54.0	27.0	61.9	27.0	34.5	35.0	50.8	12.7	33.40
32	1 1/4	133.3	98.4	19.0	4	19.0	63.5	27.0	65.1	27.0	43.2	43.7	63.5	14.3	42.16
40	1 1/2	155.6	114.3	22.2	4	20.6	69.8	30.2	68.3	30.2	49.5	50.0	73.0	15.9	48.26
50	2	165.1	127.0	19.0	8	22.2	84.1	33.3	69.8	33.3	62.0	62.5	92.1	17.5	60.31
65	2 1/2	190.5	149.2	22.2	8	25.4	100.0	38.1	76.2	38.1	74.7	75.4	104.8	19.0	73.02
80	3	209.5	168.3	22.2	8	28.6	117.5	42.9	79.4	42.9	90.7	91.4	127.0	20.6	88.90
100	4	254.0	200.0	22.2	8	31.8	146.0	47.6	85.7	47.6	116.1	116.8	157.2	23.8	114.30
125	5	279.4	234.9	22.2	8	34.9	177.8	50.8	98.4	50.8	143.8	144.5	185.7	-	141.30
150	6	317.5	269.9	22.2	12	36.5	206.4	52.4	98.4	52.4	170.7	171.4	215.9	-	168.27
200	8	381.0	330.2	25.4	12	41.3	260.3	61.9	111.1	61.9	221.5	222.2	269.9	-	219.07
250	10	444.5	387.3	28.6	16	47.6	320.7	66.7	117.5	95.2	276.3	277.4	323.8	-	273.05
300	12	520.7	450.8	31.7	16	50.8	374.6	73.0	130.2	101.6	327.1	328.2	381.0	-	323.85
350	14	584.2	514.3	31.7	20	54.0	425.4	76.2	142.9	111.1	359.1	360.2	412.7	-	355.60
400	16	647.7	571.5	34.9	20	57.2	482.6	82.5	146.0	120.6	410.5	411.2	469.9	-	406.40
450	18	711.2	628.5	34.9	24	60.3	533.4	88.9	158.7	130.2	461.8	462.3	533.4	-	457.20
500	20	774.7	685.8	34.9	24	63.5	587.4	95.2	161.9	139.7	513.1	514.3	584.2	-	508.00
600	24	914.4	812.8	41.3	24	69.8	701.7	106.4	168.3	152.4	615.9	615.9	692.1	-	609.60

All Dimensions are in Millimeters • Flanges except Lap Joint will be furnished with (1.6mm) Raised Face, which is included in Thickness(C) and Length through Hub(Y).

STAINLESS STEEL

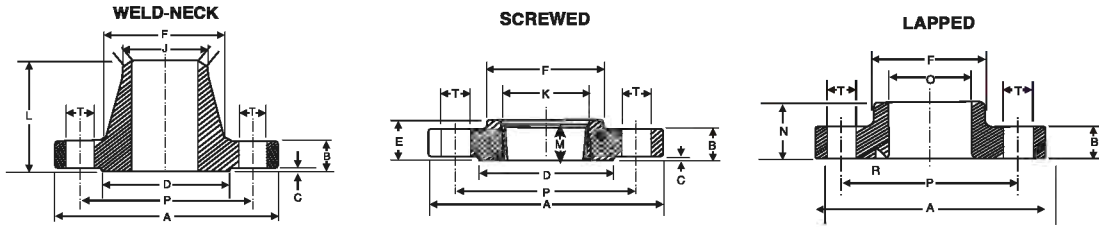
CARBON STEEL

ALLOY STEEL

NICKEL ALLOYS



NIKO STEEL CENTRE



DIMENSIONS OF CLASS 600 FLANGES AS PER ANSI B 16.5

N.B.	A	B	C	D	E	F	G	H	J	K	L	M	N	O	P	R	T	No. of Holes
15	95	14.3	6.4	35	22	38	22.4	9.5	21.3	23.5	52	16	22	23.0	66.7	3.0	15.9	4
20	117	15.9	6.4	43	25	48	27.7	11.0	26.7	29.0	57	16	25	28.0	82.6	3.0	19.0	4
25	124	17.5	6.4	51	27	54	34.5	12.5	33.4	36.0	62	17	27	35.0	88.9	3.0	19.0	4
32	133	20.6	6.4	64	29	64	43.2	14.5	42.2	44.5	67	21	29	43.5	98.4	5.0	19.0	4
40	156	22.2	6.4	73	32	70	49.5	16.0	48.3	50.5	70	22	32	50.0	114.3	6.5	22.2	4
50	165	25.4	6.4	92	37	84	62.0	17.5	60.3	63.5	73	29	37	62.5	127.0	8.0	19.0	8
65	190	28.6	6.4	105	41	100	74.7	19.0	73.0	76.0	79	32	41	75.5	149.2	8.0	22.2	8
80	210	31.8	6.4	127	46	117	90.7	20.5	88.9	92.0	83	35	46	91.5	168.3	9.5	22.2	8
90	229	34.9	6.4	140	49	133	103.4	-	101.6	105.0	86	40	49	104.0	184.2	9.5	25.4	8
100	273	38.1	6.4	157	54	152	116.1	-	114.3	118.0	102	41	54	117.0	215.9	11.0	25.4	8
125	330	44.4	6.4	186	60	189	143.8	-	141.3	145.0	114	48	60	145.0	266.7	11.0	28.6	8
150	356	47.6	6.4	216	67	222	170.7	-	168.3	171.0	117	51	67	171.0	292.1	12.5	28.6	12
200	419	55.6	6.4	270	76	273	221.5	-	219.1	222.0	133	57	76	222.0	349.2	12.5	31.8	12
250	508	63.5	6.4	324	86	343	276.4	-	273.0	276.0	152	65	111	277.0	431.8	12.5	34.9	16
300	559	66.7	6.4	381	92	400	327.2	-	323.9	329.0	156	70	117	328.0	489.0	12.5	34.9	20
350	603	69.8	6.4	413	94	432	359.2	-	355.6	360.0	165	73	127	360.0	527.0	12.5	38.1	20
400	686	76.2	6.4	470	106	495	410.5	-	406.4	411.0	178	78	140	411.0	603.2	12.5	41.3	20
450	743	82.6	6.4	533	117	546	461.8	-	457.2	462.0	184	79	152	462.0	654.0	12.5	44.4	20
500	813	88.9	6.4	584	122	610	513.1	-	508.0	513.0	190	83	165	514.0	723.9	12.5	44.4	24
600	940	101.6	6.4	692	140	718	616.0	-	609.6	614.0	203	92	184	616.0	838.2	12.5	50.8	24

DIMENSIONS OF CLASS 900 FLANGES AS PER ANSI B 16.5

N.B.	A	B	C	D	E	F	G	H	J	K	L	M	N	O	P	R	T	No. of Holes
15	121	22.2	6.4	35	32	38	22.4	9.5	21.3	23.5	60	22	32	23.0	82.6	3.0	22.2	4
20	130	25.4	6.4	43	35	44	27.7	11.0	26.7	29.0	70	25	35	28.0	88.9	3.0	22.2	4
25	149	28.6	6.4	51	41	52	34.5	12.5	33.4	36.0	73	29	41	35.0	101.6	3.0	25.4	4
32	159	28.6	6.4	64	41	64	43.2	14.5	42.2	44.5	73	30	41	43.5	111.1	5.0	25.4	4
40	178	31.8	6.4	73	44	70	49.5	16.0	48.3	50.5	83	32	44	50.0	123.8	6.5	28.6	4
50	216	38.1	6.4	92	57	105	62.0	17.5	60.3	63.5	102	38	57	62.5	165.1	8.0	25.4	8
65	244	41.3	6.4	105	64	124	74.7	19.0	73.0	76.0	105	48	64	75.5	190.5	8.0	28.6	8
80	267	47.6	6.4	127	73	133	-	-	88.9	92.0	117	51	73	91.5	203.2	9.5	31.8	8
100	311	54.0	6.4	157	91	162	-	-	114.3	118.0	124	57	91	117.0	241.3	11.0	34.9	8
125	325	73.0	6.4	186	105	197	-	-	141.3	145.0	156	64	105	145.0	292.1	11.0	41.3	8
150	394	82.6	6.4	216	119	229	-	-	168.3	171.0	171	70	119	171.0	317.5	12.5	38.1	12
200	483	92.1	6.4	270	143	292	-	-	219.1	222.0	213	75	143	222.0	393.7	12.5	44.4	12
250	584	108.0	6.4	324	159	368	-	-	273.0	276.0	254	84	178	277.0	482.6	12.5	50.8	12
300	673	123.8	6.4	381	181	451	-	-	323.9	329.0	283	92	219	328.0	571.5	12.5	54.0	16
350	749	133.4	6.4	413	-	495	-	-	356.6	-	298	-	241	360.0	635.0	12.5	60.3	16
400	826	146.1	6.4	470	-	552	-	-	406.4	-	311	-	260	411.0	704.8	12.5	66.7	16
450	914	161.9	6.4	533	-	597	-	-	457.2	-	327	-	276	462.0	774.7	12.5	73.0	16
500	984	178.0	6.4	584	-	641	-	-	508.0	-	356	-	292	514.0	831.8	12.5	79.4	16
600	1168	203.0	6.4	692	-	762	-	-	609.6	-	406	-	330	616.0	990.6	12.5	92.0	16

- 1) All dimensions are in Millimeters
- 2) Flanges except Lap Joint will be furnished with (1.6) Raised Face, which is included in "Thickness(C)" and "Length through Hub(Y)".

STAINLESS STEEL

CARBON STEEL

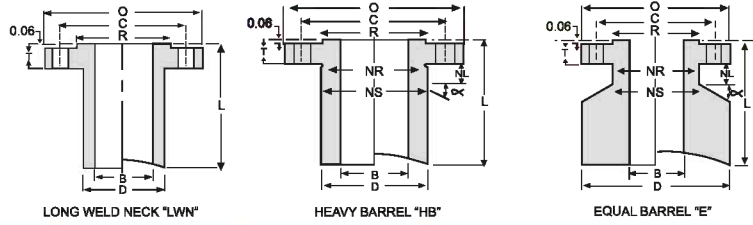
ALLOY STEEL

NICKEL ALLOYS



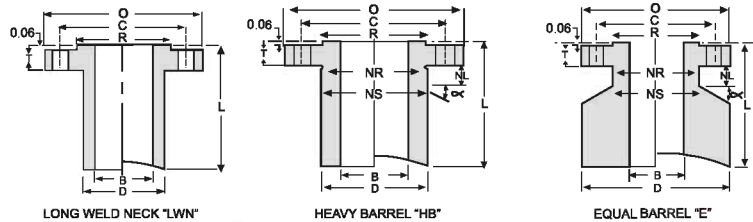
NIKO STEEL CENTRE

CLASS 150 - Standard Connection Specifications



Size		Flange				Barrel OD			Bolting			Nut			Stud Bolt			Weights				Length		
Nom	Bore LWN & E	Bore HB	OD	Thk.	RF of OD	LWN	HB	E	# of Holes	Hole Size	Bolt Circle	Stop Dia	Relief Dia	Relief Length	Size	RF Length	RTJ Length	LWN		HB		E		Base
	B	B	O	T	R	D	D	D			C	NS	NR	NL				Base	Per 1"	Base	Per 1"	Base	Per	L
1/2	0.50	0.55	3.50	0.44	1.38	1.25	1.50	3.50	4	0.60	2.38	1.50	1.25	0.75	1/2	2 1/4	2 3/4	3	0.3	5	0.4	21	2.7	9
3/4	0.75	0.74	3.88	0.50	1.69	1.62	1.88	3.88	4	0.62	2.75	1.88	1.62	0.75	1/2	2 1/2	3	5	0.5	7	0.7	27	3.2	9
2	1.00	0.96	4.25	0.56	2.00	2.00	2.25	4.25	4	0.62	3.12	2.25	2.00	0.75	1/2	2 1/2	3	7	0.7	10	0.9	30	3.8	9
1 1/4	1.25	1.28	4.62	0.62	2.50	2.38	2.62	4.62	4	0.62	3.50	2.62	2.38	0.75	1/2	2 3/4	3 1/4	10	0.9	12	1.2	36	4.4	9
1 1/2	1.50	1.50	5.00	0.69	2.88	2.62	3.00	5.00	4	0.62	3.88	3.00	2.62	0.75	1/2	2 3/4	3 1/4	12	1	16	1.5	41	5.1	9
2	2.00	1.94	6.00	0.75	3.62	3.06	3.69	6.00	4	0.75	4.75	3.69	3.06	0.88	5/8	3 1/4	3 3/4	15	1.2	23	2.2	57	7.1	9
2 1/2	2.50	2.32	7.00	0.88	4.12	3.75	4.44	7.00	4	0.75	5.50	4.44	3.75	0.88	5/8	3 1/2	4	22	1.7	34	3.2	79	10	9
3	3.00	2.90	7.50	0.94	5.00	4.25	4.94	7.50	4	0.75	6.00	4.94	4.25	0.88	5/8	3 1/2	4 1/4	25	2	38	3.6	86	11	9
3 1/2	3.50	3.36	8.50	0.94	5.50	4.88	5.94	8.50	8	0.75	7.00	5.94	4.88	0.88	5/8	3 1/2	4 1/4	32	2.6	55	5.3	110	13	9
4	4.00	3.83	9.00	0.94	6.19	5.50	6.44	9.00	8	0.75	7.50	6.44	5.50	0.88	5/8	3 1/2	4 1/4	47	3.2	78	6	164	14	12
5	5.00	4.81	10.00	0.94	7.31	6.50	7.25	10.00	8	0.88	8.50	7.25	6.50	1.00	3/4	3 3/4	4 1/2	57	3.8	87	6.5	189	17	12
6	6.00	5.76	11.00	1.00	8.50	7.75	8.25	11.00	8	0.88	9.50	8.25	7.75	1.00	3/4	4	4 1/2	75	5.4	103	7.8	216	17	12
8	8.00	7.62	13.50	1.12	10.62	9.75	10.50	13.50	8	0.88	11.75	10.50	9.75	1.00	3/4	4 1/4	4 3/4	102	6.9	157	11	292	26	12
10	10.00	9.56	16.00	1.19	12.75	12.00	12.81	16.00	12	1.00	14.25	12.81	12.00	1.12	7/8	4 3/4	5 1/4	143	9.8	214	16	382	35	12
12	12.00	11.38	19.00	1.25	15.00	14.38	15.56	19.00	12	1.00	17.00	15.56	14.38	1.12	7/8	4 3/4	5 1/2	205	14	329	25	535	48	12

Dimensions are in inches. Weights are in pounds.



CLASS 300 - Standard Connection Specifications

Size		Flange				Barrel OD			Bolting			Nut			Stud Bolt			Weights				Length		
Nom	Bore LWN & E	Bore HB	OD	Thk.	RF of OD	LWN	HB	E	# of Holes	Hole Size	Bolt Circle	Stop Dia	Relief Dia	Relief Length	Size	RF Length	RTJ Length	LWN		HB		E		Base
	B	B	O	T	R	D	D	D			C	NS	NR	NL				Base	Per 1"	Base	Per 1"	Base	Per	L
1/2	0.50	0.55	3.75	0.56	1.38	1.50	1.75	3.75	4	0.62	2.62	1.75	1.50	0.75	1/2	2 1/2	3	5	0.4	7	0.6	24	3.1	9
3/4	0.75	0.74	4.62	0.62	1.69	1.88	2.19	4.62	4	0.75	3.25	2.19	1.88	0.88	5/8	3	3 1/2	9	0.7	11	0.9	37	4.6	9
1	1.00	0.96	4.88	0.69	2.00	2.12	2.44	4.88	4	0.75	3.50	2.44	2.12	0.88	5/8	3 1/4	3 1/2	9	0.8	12	1.1	40	5.1	9
1 1/4	1.25	1.28	5.25	0.75	2.50	2.50	2.81	5.25	4	0.75	3.88	2.81	2.50	0.88	5/8	3 1/4	3 3/4	13	1	15	1.4	45	5.8	9
1 1/2	1.50	1.50	6.12	0.81	2.88	2.75	3.25	6.12	4	0.75	0.88	4.50	3.25	2.75	1.00	3/4	3 1/2	4 1/4	20	1.5	28	2.6	8.5	9
2	2.00	1.94	6.50	0.88	3.62	3.31	3.94	6.50	8	0.75	5.00	3.94	3.31	0.88	5/8	3 1/2	4 1/4	20	1.5	28	2.6	68	8.5	9
2 1/2	2.50	2.32	7.50	1.00	4.12	3.94	4.62	7.50	8	0.88	5.88	4.62	3.94	1.00	3/4	4	4 1/2	25	2.1	38	3.6	89	11	9
3	3.00	2.90	8.25	1.12	5.00	4.62	5.38	8.25	8	0.88	6.62	5.38	4.62	1.00	3/4	4 1/4	5	35	2.7	49	4.6	106	13	9
3 1/2	3.50	3.36	9.00	1.19	5.50	5.25	6.00	9.00	8	0.88	7.25	6.00	5.25	1.00	3/4	4 1/4	5	42	3.4	59	5.5	122	15	9
4	4.00	3.83	10.00	1.25	6.19	5.75	6.62	10.00	8	0.88	7.88	6.62	5.75	1.00	3/4	4 1/2	5 1/4	62	3.8	91	6.5	207	19	12
5	5.00	4.81	11.00	1.38	7.31	7.00	8.00	11.00	8	0.88	9.25	8.00	7.00	1.00	3/4	4 3/4	5 1/4	84	5.3	124	9.1	241	21	12
6	6.00	5.76	12.50	1.44	8.50	8.12	9.38	12.50	12	0.88	10.62	9.38	8.12	1.00	3/4	4 3/4	5 3/4	105	6.7	165	12	303	27	12
8	8.00	7.62	15.00	1.62	10.62	10.25	11.56	15.00	12	1.00	13.00	11.56	10.25	1.12	7/8	5 1/2	6 1/4	148	9.1	228	17	405	36	12
10	10.00	9.56	17.50	1.88	12.75	12.62	13.62	17.50	16	1.12	15.25	13.62	12.62	1.25	1	6 1/4	7 1/4	210	13	291	21	499	46	12
12	12.00	11.38	20.50	2.00	15.00	14.75	15.94	20.50	16	1.25	17.75	15.94	14.75	1.38	1 1/8	6 3/4	7 1/2	275	16	392	28	651	61	12

Dimensions are in inches. Weights are in pounds.

STAINLESS STEEL

CARBON STEEL

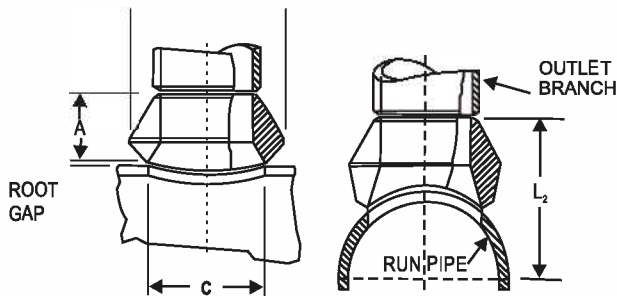
ALLOY STEEL

NICKEL ALLOYS



NIKO STEEL CENTRE

REDUCING & FLAT SIZE EXTRA STRONG, RUN AND BRANC HFORGED



Outlet Size Inches	Dimensions (Inches)		
	A	B	C
1/8	5/8	1	5/8
1/4	5/8	1	5/8
3/8	3/4	1-1/4	3/4
1/2	3/4	1-3/8	1-5/16
3/4	7/8	1-3/4	1-3/16
1	1-1/16	2-1/8	1-7/16
1-1/4	1-1/4	2-9/16	1-3/4
1-1/2	1-5/16	2-7/8	2
2	1-1/2	3-1/2	2-9/16
2-1/2	1-5/8	4-1/16	3
3	1-3/4	4-13/16	3-11/16
3-1/2	1-7/8	5-3/8	4
4	2	6	4-3/4
5	2-1/4	7-1/16	5-9/16
6	3-1/16	8-7/8	6-11/16
8	3-7/8	11-1/2	8-11/16
10	3-11/16	12-3/4	10-7/16
12	4-1/16	14-15/16	12-1/2
14	3-15/16	17	13-13/16
16	4-3/16	18-3/8	15-7/8
18	4-3/8	20-3/8	17-15/16
20	4-11/16	22-15/16	20-1/16
24	5-1/2	27-7/8	24-3/16
26	5-3/4	30-1/8	27-1/4

30, 36 and larger sizes available on application.

SIZE ON SIZE EXTRA STRONG, RUN AND BRANCH FORGED

Each Outlet size listed is available to fit any run curvature.
Design per MSS-SP-97. BW ends per B16.9 and B16.25

RUN PIPE SIZES Outlet sizes 6" and less fit a number of run sizes, and the fittings are marked accordingly. See pages 54-55 for run pipe size combination table(s).

SCHEDULES Extra Stron fittings are the same as Schedule 80 through 8". Pipe schedule numbers and weight designation are in accordance with ASME B36.10 A Schedule 80 Weldolet for sizes 10" and larger is available. Dimensions and pr application

Outlet Size Inches	Dimensions (Inches)			
	A	B	C	D
1/2	3/4	1-3/8	1-5/16	5/8
3/4	7/8	1-5/8	1-3/16	1-3/16
1	1-1/16	2	1-7/16	1-1/32
1-1/4	1-3/4	2-7/16	1-3/4	1-3/8
1-1/2	1-5/16	2-7/8	2	1-5/8
2	1-1/2	3-1/2	2-9/16	2-1/16
2-1/2	1-5/8	4-1/16	3	2-7/16
3	1-3/4	4-13/16	3-11/16	3-1/16
3-1/2	2	5-3/8	3-7/8	3-9/16
4	2	6	4-3/4	4
5	2-1/4	7-1/8	5-9/16	5-1/16
6	3-1/16	8-7/8	6-11/16	6-1/16
8	3-7/8	10-5/8	8-11/16	7-5/8
10	3-1/2	12-7/8	10-7/16	9-3/4
12	3-15/16	15-3/16	13	11-3/4
14	4-1/8	16-11/16	14-5/16	13
16	4-7/16	18-7/8	16-1/2	15
18	4-11/16	21-1/8	18-5/8	17
20	5	23-3/8	20-13/16	16
24	5-1/2	27-7/8	25-1/8	23
26	5-3/4	30-1/8	27-1/4	25

30, 36 and larger sizes available on application.

STAINLESS STEEL

CARBON STEEL

ALLOY STEEL

NICKEL ALLOYS



NIKO STEEL CENTRE

SIZE ON SIZE SCHEDULE 160 & DOUBLE EXTRA STRONG RUN AND BRANCH FORGED & OUTLET FITTINGS

Each Outlet size listed is available to fit any run curvature.
Larger Sizes Available on Application.
Design per MSS-SP-97. BW ends per B16.9 and B16.25

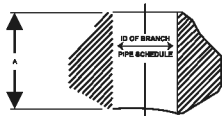
RUN PIPE SIZES Outlet sizes 4" and less fit a number of run pipe sizes, and the fittings are marked accordingly.



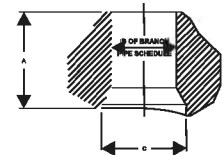
Outlet Size (Inches)	Dimensions (Inches)		
	A	B	C
1/2	1-1/8	1-3/8	9/16
3/4	1-1/4	1-3/4	3/4
1	1-1/2	2	1
1-1/4	1-3/4	2-7/16	1-5/16
1-1/2	2	2-3/4	1-1/2
2	2-3/16	3-3/16	1-11/16
2-1/2	2-7/16	3-13/16	2-1/8
3	2-7/8	4-3/4	2-7/8
4	3-5/16	6	3-7/8
5	3-11/16	7-3/8	4-13/16
6	4-1/8	8-11/16	5-3/4
8-24	For dimensions see Heavy Wall Weldolet, page 53		

HEAVY WALL FORGED

TYPE 1



TYPE 2



The Heavy Wall Forged Weldolet[®] is an integrally reinforced branch connection.

It provides the economical and engineering answer to the problem of welding outlet fittings on high pressure, high temperature piping and pressure vessels.

Type 1 - Straight through bore design

Type 2 - Conventional tapered bore design



Run Wall Thickness	3/4		1		1-1/4		1-1/2		1-3/4		2		2-1/4		2-1/2		2-3/4		3	
	A	C	A	C	A	C	A	C	A	C	A	C	A	C	A	C	A	C	A	C
3	2-7/8	2906	3-7/32	2900	3-3/8	2906	3-5/8	2900	4-1/8	2900	4-9/16	2900	5	2900	5-1/2	2900	5-7/8	2900	6-1/16	2900
3-1/2	3-1/8	3.359	3-1/4	3.359	3-7/16	3.359	3-3/4	3.359	4-3/16	3.359	4-5/8	3.359	5-1/16	3.359	5-9/16	3.359	6	3.359	6-5/16	3.359
4	3-5/16	3.843	3-3/8	3.826	3-1/2	3.828	3-7/8	3.826	4-3/4	3.826	4-3/4	3.826	5-3/16	3.826	5-5/8	3.826	6-1/8	3.826	6-9/16	3.826
5	3-3/4	4.812	3-3/4	4.812	4	4.812	4-1/4	4.812	4-3/4	4.812	5-1/4	4.812	5-3/4	4.812	6-1/4	4.812	6-5/8	4.812	7-3/16	4.812
6	4-1/8	5.750	4-11/32	5.761	4-1/2	5.760	4-11/16	5.760	5-1/4	5.760	5-3/4	5.760	6-1/4	5.760	6-3/4	5.760	7-1/4	5.760	7-13/16	5.760
8	4-3/16	7.625	4-5/8	7.625	4-7/8	7.625	5-5/32	7.625	5-3/4	7.625	6-11/32	7.625	6-15/16	7.625	7-17/32	7.625	8-3/32	7.625	8-11/16	7.625
10	4-1/4	9.750	4-27/32	9.750	5	9.562	5-5/16	9.562	5-15/16	9.562	6-9/16	9.562	7-3/16	9.562	7-13/16	9.562	8-7/16	9.562	9-1/16	9.562
12	4-3/8	11.750	5-3/32	11.750	5-3/8	11.375	5-11/16	11.375	6-5/16	11.375	6-15/16	11.375	7-9/16	11.375	8-3/16	11.375	8-13/16	11.375	9-7/16	11.375
14	4-1/2	13	5-1/4	13	5-1/2	12.500	5-13/16	12.500	6-5/16	12.500	6-15/16	12.500	7-9/16	12.500	8-3/16	12.500	8-13/16	12.500	9-7/16	12.500
16	4-11/16	15	5-7/8	15	6	14.312	6-7/16	14.310	7-1/4	14.310	7-1/4	14.310	7-7/8	14.310	8-1/2	14.310	9-1/8	14.310	9-3/4	14.310
18	5-1/8	17	6-1/2	17	6-1/2	16.125	6-1/2	16.126	6-13/16	16.126	7-7/16	16.126	8-7/32	16.126	8-13/16	16.126	9-13/32	16.126	10-1/32	16.126
20	5-5/8	19	6-3/4	19	7	17.937	7-9/16	17.938	7-25/32	17.938	8-3/32	17.938	8-21/32	17.938	9-1/4	17.938	9-29/32	17.938	10-15/32	17.938
24	6-1/2	23	7-5/8	23	8	21.564	8-23/32	21.564	8-31/32	21.564	9-13/16	21.568	10-1/2	21.568	11	21.564	12-9/16	21.564	10-21/32	21.564

REASONS FOR USING WELDOLETS :

- (a) Funneled inlet provides full fluid flow
- (b) Wide footing improves mechanical strength & provides rugged construction.
- (c) Wherever backwelding or reinforced branches (saddles, reinforcing pads) are required.

TEMPERATURE/PRESSURE RATINGS:

Weldolet welding fittings are rated the same as seamless steel pipe. Header assemblies with full size and reducing branches constructed with weldolet welding fittings tested in accordance with the provisions of ASME B16.9 in all cases burst in the header pipe well above the computed minimum bursting strength of the straight run of unpenetrated pipe.

STAINLESS STEEL

CARBON STEEL

ALLOY STEEL

NICKEL ALLOYS



NIKO STEEL CENTRE

S. S. Instrumental Ferrule Fittings



Union Elbow



Male Elbow



Female Elbow



Union Tee



Male Run Tee



Male Branch Tee



Female Run Tee



Female Branch Tee



Union Cross



45 Deg. Elbow



Tube end Closure



Bulk Head Elbow



Positionable Male Elbow



Nut Ferrule



Union



Reducing Union



Bulkhead Union



Male Connector



Female Connector



Male Adaptor



Female Adaptor

S. S. Tee / Elbow Ferrule Fittings

- S.S. Union Tee
- S.S. Male Branch Tee
- S.S. Female Branch Tee
- S.S. Male Elbow
- S.S. Cross
- S.S. Valve Body
- S.S. Union
- S.S. Union Tee
- S.S. Male Branch Tee
- S.S. Female Branch Tee
- S.S. Male Elbow
- S.S. Cross
- S.S. Valve Body
- S.S. Union



Design : Double Ferrule Type & Single Ferrule
 Size Range : 1/16" Tube OD to 2" Tube OD
 End Connection : OD / NPT / BSP / SW / BW
 Material : SS 316 / SS 304 / CS/ Monel / Brass



Manifold Valves

Design : Two Way, Three Way, Five Way, Manifold Straight & 'T' Type & 'H' Type
 End Connection : NPT / BSP / Flange (1/8" to 1")
 Material : SS316 / SS304 / CS / Brass / Monel
 Pressure Rating : 10,000 psig



WE ALSO SUPPLY YOU FORGED BODY MANIFOLD VALVES

Needle Valves

Needle valves are available in size, range of 1/8" to 1" with Double Ferrules Tube connection and NPT, BSP, BSPT, thread male/female connections with maximum working pressure 10,000 psi. Valves are available in Stainless Steel of all grades, Monel, Brass, C.S. etc.



Syphon Tubes

Type : Stainless Steel 304 & 316 Gr. in U type, Trumpet Type (Pigtail & Coil Type)
 Application : Connected between the pressure gauge & process in applications where high temperature above 65 Deg C for e.g., steam. These Syphon Tubes acts as a cooling coil and protects the gauge from high temperature vapors



STAINLESS STEEL

CARBON STEEL

ALLOY STEEL

NICKEL ALLOYS



NIKO STEEL CENTRE

PRODUCT RANGE

BOLT / SCREW

HEXAGONAL HEAD SCREWS - METRIC SERIES	M3 TO M56
HEXAGONAL HEAD SCREWS - INCH SERIES	3/16" TO 2"
HEXAGONAL HEAD BOLTS - METRIC SERIES	M3 TO M56
HEXAGONAL HEAD BOLTS - INCH SERIES	3/16" TO 2"
SOCKET HEAD CAP SCREW - METRIC SERIES	M3 TO M24
SOCKET HEAD CAP SCREW - INCH SERIES	3/16" TO 1"
COUNTERSUNK HEAD CAP SCREW - METRIC SERIES	M3 TO M20
COUNTER HEAD CAP SCREW - INCH SERIES	3/16" TO 3/4"
BUTTON HEAD CAP SCREW - METRIC SERIES	M3 TO M20
BUTTON HEAD CAP SCREW - INCH SERIES	3/1" TO 3/4"
SOCKET SET SCREW - METRIC SERIES	M3 TO M20
SOCKET SET SCREW - INCH SERIES	3/16" TO 3/4"
MUSHROOM HEAD SQUARE NECK BOLT - METRIC SERIES	M3 TO M24
MUSHROOM HEAD SQUARE NECK BOLT - INCH SERIES	3/16" TO 1"



THREAD ROD

THREADED ROD - METRIC SERIES	M3 TO M56
THREADED ROD - INCH SERIES	3/16" TO 2"

NUTS

HEXAGON NUTS - METRIC SERIES	M3 TO M56
HEXAGON NUTS - INCH SERIES	3/16" TO 2"
HEXAGON THIN NUTS - METRIC SERIES	M3 TO M24
HEXAGON THIN NUTS - INCH SERIES	3/16" TO 1"
SELF LOCKING NUT SERIES - METRIC SERIES	M3 TO M24
SELF LOCKING NUT SERIES - INCH SERIES	3/16" TO 1"
DOM NUT SERIES - METRIC SERIES	M3 TO M24
DOM NUT SERIES - INCH SERIES	3/16" TO 1"
WING NUTS	M3 TO M24
WING NUTS	3/16" TO 1"

WASHERS

FLAT WASHER	M3 TO M56
SPRING LOCK WASHERS	M3 TO M56
STAR WASHERS	M3 TO M20
TAB WASHERS	M3 TO M24

MACHINE SCREWS

CHEESE HEAD SLOTTED - METRIC SERIES	M1.6 TO M12
CHEESE HEAD SLOTTED - INCH SERIES	1/8" X 1/2"
ROUND HEAD SLOTTED - METRIC SERIES	M1.6 TO M12
ROUND HEAD SLOTTED - INCH SERIES	1/8" X 1/2"
COUNTERSUNK HEAD SLOTTED - METRIC SERIES	M1.6 TO M12
COUNTERSUNK HEAD SLOTTED - INCH SERIES	1/8" X 1/2"
PAN HEAD SLOTTED - METRIC SERIES	M1.6 TO M12
PAN HEAD PHILIPSE	M1.6 TO M10
COUNTERSUNK HEAD PHILIPSE	

SELF TAPPING SCREW

PAN SLOTTED	NO.2 TO NO.14
COUNTERSUNK HEAD SLOTTED	NO.2 TO NO.14
PAN HEAD PHILIPSE	NO.2 TO NO.14
COUNTERSUNK HEAD PHILIPSE	NO.2 TO NO.14
WOOD SCREW	NO.2 TO NO.14



STAINLESS STEEL

CARBON STEEL

ALLOY STEEL

NICKEL ALLOYS



NIKO STEEL CENTRE

VALVES

GLOBE VALVE

BS 5352 / BS 6755 / BS 1873 /
BS 6755 / ASME B 16.34 / DIN 3356



STAINLESS STEEL (BAR STOCK)

RATING : 150# / 300#
SIZE : 8 MM TO 100 MM

FORGED CARBON STEEL / S. STEEL

RATING : 150# / 300# / 800# / 1500#
SIZE : 15 MM TO 50 MM

CAST CARBON STEEL / S. STEEL / ALLOY STEEL

RATING : 125# / 150#
SIZE : 25 MM TO 600 MM

CAST IRON

RATING : 150# / 300# / 600# / 900#
SIZE : 15 MM TO 400 MM

	FORGED RANGE	CAST RANGE
DESIGN (Mfg.) STD.	BS 5352	BS 1873 / DIN 3356
TEST (INSPECTION) STD.	BS 6755	BS 6755

STRAINER



CAST CARBON STEEL

DESIGN : Y TYPE (PN 40 / DIN 3356 /
BS 1873)

SIZE : 15 MM TO 80MM

STAINLESS STEEL (BAR STOCK)

DESIGN : Y - TYPE (150#)

ENDS : SCREWED / SOCKET WELD

SIZE : 15 MM TO 80 MM

CAST IRON

DESIGN : Y-TYPE (150#)

ENDS : SCREWED / FLANGED

SIZE : 15 MM TO 300 MM

DESIGN : POT TYPE

ENDS : FLANGED

SIZE : 40 MM TO 300 MM

DESIGN : T - TYPE (DIRT BOX)

ENDS : FLANGED

SIZE : 25 MM TO 300 MM

GATE VALVE

BS 1414 / BS 5352 / API 600 / API 602
/ API 6D / ASME / B 16.34 / API 598



STAINLESS STEEL (BAR STOCK)

RATING : 150# / 300#
SIZE : 8 MM TO 100 MM

FORGED C. STEEL / S. STEEL

RATING : 150# / 300# / 800#
/ 1500#
SIZE : 15 MM TO 50 MM

CAST IRON

RATING : 125# / 150#
SIZE : 25 MM TO 600 MM

CAST C. S. / S. S. / A. S.

RATING : 150# / 300# / 600#
/ 900#
SIZE : 15 MM TO 600 MM

	FORGED RANGE	CAST RANGE
PRESSURE / TEMP. RATING	ANSI B 16.34 / API 6D	ANSI B 16.34
DESIGN (Mfg.) STD.	API 602 / BS 5352	API 600 / API 6D
TEST (INSPECTION) STD.	API 598 / BS 6755	API 598 / API 6D

BUTTERFLY VALVE



API 609 / BS 5155 / IS 13095

Mfg. STD : BS 3155 / AWWA C 504 / API 609 /
IS 13095

TEST STD. : BS 5155 / BS 6755

CAST C. STEEL

OPERATION : LEVER / MANUAL GEAR

DESIGN : SURESEAL / REPLACEABLE /
RUBBER LINING

ENDS : WATER TYPE

SIZE : 40 MM TO 500 MM

DESIGN : OFFSET DISC

OPERATION : LEVER / GEAR (ISI MARKED)

ENDS : WATER TYPE / DOUBLE /
FLANGED / LUGGED TYPE

SIZE : 350 MM TO 1200 MM

CAST IRON

DESIGN : SURESEAL / REPLACEABLE /
RUBBER LINING

ENDS : WATER TYPE

SIZE : 40 MM TO 300 MM

STAINLESS STEEL

DESIGN : OFFSET DISC

OPERATION : LEVER/MANUAL GEAR /
MOTORISED GEAR

ENDS : WATER TYPE

SIZE : 40 MM TO 300 MM

NON RETURN VALVE

BS 6755 / BS 1868 / ASME B 16.34 / API 6D



STAINLESS STEEL (BAR STOCK)

RATING : 150# / 300#
SIZE : 8 MM TO 100 MM

FORGED C. STEEL / S. STEEL

RATING : 150# / 300# / 800#
/ 1500#
SIZE : 15 MM TO 50 MM

CAST IRON

RATING : 125# / 150#
SIZE : 25 MM TO 400 MM

CAST C.S. / S. S. / A.S.

RATING : 150# / 300# / 600# /
900#
SIZE : 15 MM TO 600 MM

	FORGED RANGE	CAST RANGE
DESIGN (Mfg.) STD.	BS 5352	BS 1868 / API 6D
TEST (INSPECTION) STD.	BS 6755	BS 6755 / API 6D

BALL VALVE



CAST IRON

DESIGN : 1 PC / 3 PC

ENDS : SCREWED / SOCKET WELD

FLANGED

SIZE : 15 MM TO 100 MM

CAST CARBON STEEL / CAST C. STEEL POLYPROPYLENE

DESIGN : SCREWED / SOCKET WELD

FLANGED

SIZE : 15 MM TO 400 MM

STAINLESS STEEL (BAR STOCK)

MOC : SS 304 / 316 (BAR STOCK)

DESIGN : 1 PC / 3 PC

ENDS : SCREWED / SOCKET WELD /
FLANGED

SIZE : 6 MM TO 100 MM

DIAPHRAGM VALVE



CAST IRON / S S 304 / 316

LINING : NATURAL RUBBER / EBONITE
/ NEOPRENE / NITRILE

SIZE : 15 MM TO 200 MM

ENDS : SCREWED / FLANGED /
TRICLOVER

Also available

1. Check Valve
2. Plug Valve
3. Needle Valve
4. Safety Relief Valve
5. Sluice Valve
6. Pressure Reducing Valve

STAINLESS STEEL

CARBON STEEL

ALLOY STEEL

NICKEL ALLOYS



NIKO STEEL CENTRE

BLIND RIVETS

- Grooved Type Blind Rivet >  ● Aluminium Bulb Type > 
- Closed End Blind Rivet >  ● 'H' Look > 
- Countersunk Head >  ● Large Flange > 
- Large Flange Multi Grip >  ● Plastic Blind Rivets > 
- Mono Bolt >  ● Ring-Grooved Lockbolt > 
- Mono Bolt CSK >  ● Multi Grip Blind Rivet > 
- Open Flange >  ● Open Flange > 

RIVETS SOLID / HOLLOW (SEMI)

BLIND RIVETS NUT / NUT INSERT



Ribbed "L" Series



Ribbed "K" Series



Half Hex Body Large Flange Rivet Nut

CNC COMPONENTS

Any Kind of CNC Components (As per the Customers Drawing) can be manufactured in S.S., C.S., Titanium, Hastelloys, Monel, Nickel Alloys, Inconel, Brass, Aluminum, etc.



STAINLESS STEEL

CARBON STEEL

ALLOY STEEL

NICKEL ALLOYS



NIKO STEEL CENTRE

FABRICATED PRODUCT



- Spool** : Piping spools as per drawing and customer specification.
- Dish Ends** : Upto 5.5 meter and 63 mm thickness as per customer requirements.
- Rolled Shells** : From 320 mm ID upto 5 meter ID with length upto 3000 mm.
- Cones** : Upto 75 mm thickness from 600 mm ID and above.

HEAVY FORGED COMPONENTS



- Forged Bars** : 200mm to 1200 upto 15 meters long
- Shafts & Step Shafts** : Upto 2000mm Flange dia & length upto 15 meters.
- Tube Sheet / Gear Blanks** : Upto 3.5 meters in outside diameter.
- Blanks / Circles / Rings** : Upto 3.5 meters in outside diameter.
- Other Components** : Blocks, Plates, Tube Forgings, Cylinders & other Hollow Bodies as per customers requirements.
- Surface Condition** : Forged rough, Proof machined or final machined condition
- Heat Treatment** : As per code or specified customer requirements.
- Forgings Capabilities** : Upto 50 metric ton single piece.
- Materials** : From well known forged shop approved with IBR & other TPL's.

Other products as per customer drawings and specification with ASME Approved welders.

Application Industries

PHARMACY INDUSTRIES

FOOD INDUSTRIES

OIL & GAS INDUSTRIES

TEXTILE INDUSTRIES

CEMENT INDUSTRIES

REFINERY PLANTS

POWER PLANT

FIRE FALLING SYSTEMS

CHEMICAL

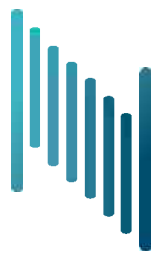
FERTILIZERS

PAPER & PULP SYSTEMS

BEVERAGE INDUSTRIES

ENGINEERING





NIKO STEEL CENTRE

STAINLESS STEEL | CARBON STEEL | ALLOY STEEL | NICKEL ALLOYS

24/26, Shop No. 6B, Sindhi Lane, Near N. D. Road, Mumbai - 400 004. India

Tel.: +91-22 6636 2225 / 2386 7225 / Fax : +91-22 2380 0765

Email : sales@nikosteelcentre.com

www.nikosteelcentre.com